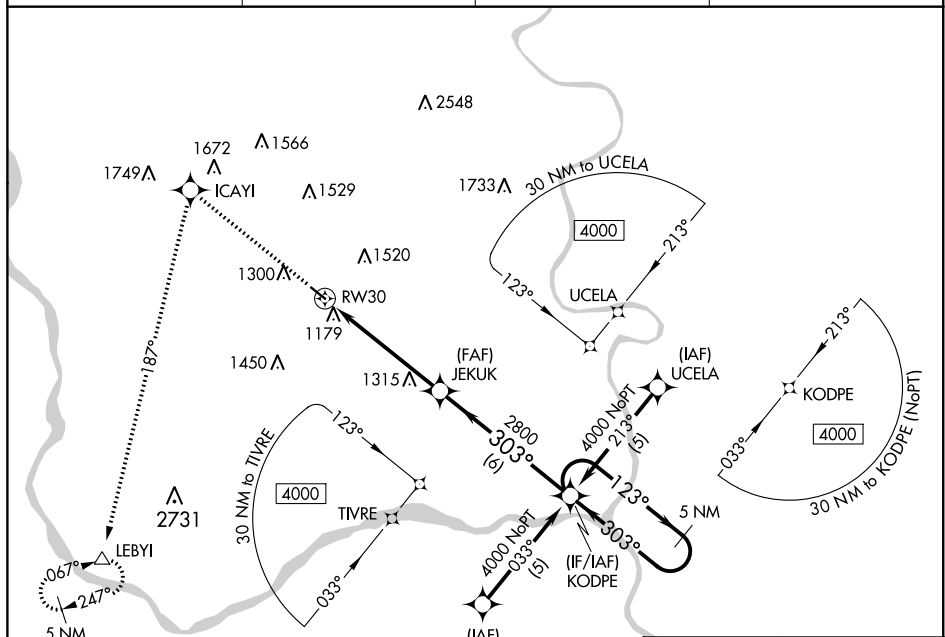
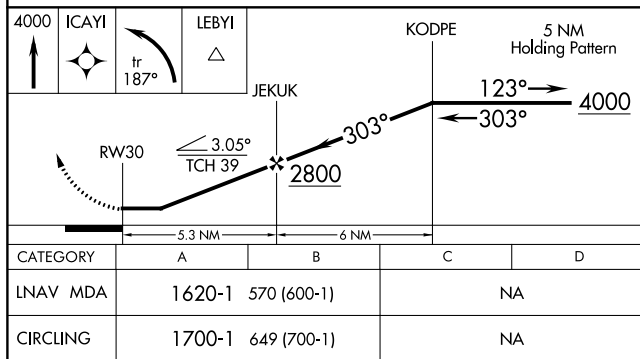


RNAV (GPS) RWY 30  
MILLARD (MLE)

MISSED APPROACH: Climb to 4000  
direct ICAYI and left turn via 187°  
track to LEBYI and hold.

UNICOM  
123.0 (CTAF) **L**

NC-2, 31 DEC 2020 to 28 JAN 2021



MILLARD (MLE)  
RNAV (GPS) RWY 30