

WAAS CH <b>97538</b> <b>W13A</b>	APP CRS <b>138°</b>	Rwy Idg TDZE Apt Elev	<b>4504</b> <b>1907</b> <b>1907</b>
--	------------------------	-----------------------------	---

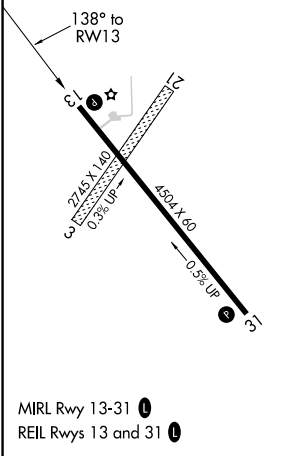
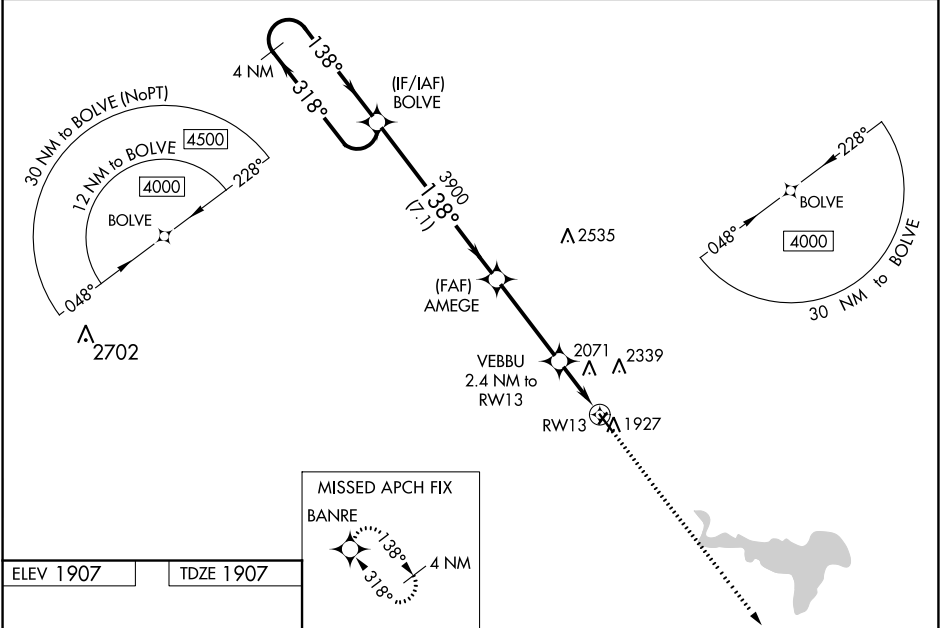
RNAV (GPS) RWY 13  
PHILLIPSBURG MUNI (PHG)

RNP APCH

**NA** Circling NA to Rwy 3 and 21. For uncompensated Baro-VNAV systems, LNAV/VNAV NA below -18°C or above 54°C. Circling NA northeast of Rwy 13-31. Rwy 13 helicopter visibility reduction below ¾ SM NA. Baro-VNAV and VDP NA when using Hays Rgnl altimeter setting. When local altimeter setting not received, use Hays Rgnl altimeter setting and increase all DA and MDA 140 feet; increase LPV visibility ¼ mile all Cats and LNAV/VNAV visibility ½ mile all Cats; increase LNAV Cat C visibility ¾ mile and Circling Cat C visibility ¼ mile.

MISSED APPROACH:  
Climb to 4000 direct  
BANRE and hold.

AWOS-3PT <b>119.125</b>	DENVER CENTER <b>132.7 226.675</b>	UNICOM <b>122.8 (CTAF) 0</b>
----------------------------	---------------------------------------	---------------------------------



ELEV 1907		TDZE 1907	
MISSED APCH FIX BANRE		4000	
4 NM Holding Pattern		BANRE	
4000		*1.2 NM to RW13	
GP 3.00° TCH 50		RW13	
7.1 NM		1.2	
CATEGORY	A	B	C
LPV DA	2157-1	250 (300-1)	NA
LNAV/VNAV DA	2358-1½	451 (500-1½)	NA
LNAV MDA	2340-1	433 (500-1)	2340-1¼ 433 (500-1¼)
CIRCLING	2340-1 433 (500-1)	2360-1 453 (500-1)	2380-1½ 473 (500-1½)