

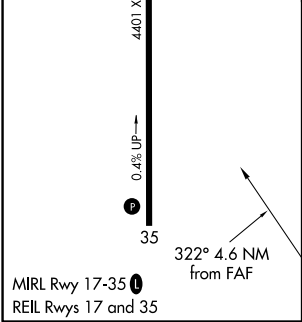
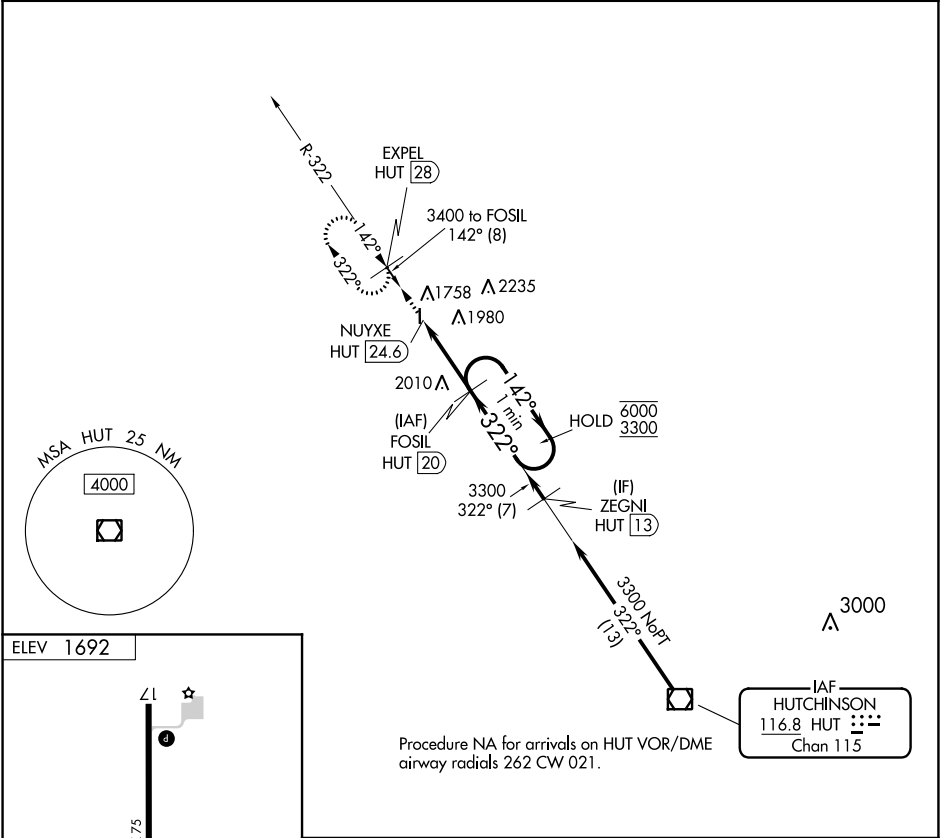
VOR/DME HUT	APP CRS	Rwy Idg	N/A
116.8	322°	TDZE	N/A
Chan 115		Apt Elev	1692

VOR-A

LYONS-RICE COUNTY MUNI (LYO)

DME required.	MISSED APPROACH: Climb to 3400 on HUT VOR/DME R-322 to EXPEL/HUT 28 DME and hold.
<div><div></div><div></div></div> <div>Circling to Rwy 17 NA at night. When local altimeter setting not received, use Hutchinson altimeter setting.</div>	

AWOS-3P 119.925	KANSAS CITY CENTER 118.8 322.425	UNICOM 122.8 (CTAF) 0
--------------------	-------------------------------------	--------------------------



<div>3400 ↑ HUT R-322</div>		<div>EXPEL HUT 28</div>		<div>FOSIL HUT 20</div>		One Minute Holding Pattern	
<div><div></div><div>NUYXE HUT 24.6</div></div>		<div>322°</div>		<div>142° → 6000 ← 322° 3300</div>			
<div>4.6 NM</div>							
CATEGORY	A		B		C		D
CIRCLING	2400-1 708 (800-1)				NA		