

WAAS CH <b>53303</b> <b>W26A</b>	APP CRS <b>263°</b>	Rwy Idg TDZE Apt Elev	<b>5102</b> <b>3254</b> <b>3279</b>
--	------------------------	-----------------------------	---

RNAV (GPS) RWY 26

SEARLE FIELD (OGA)

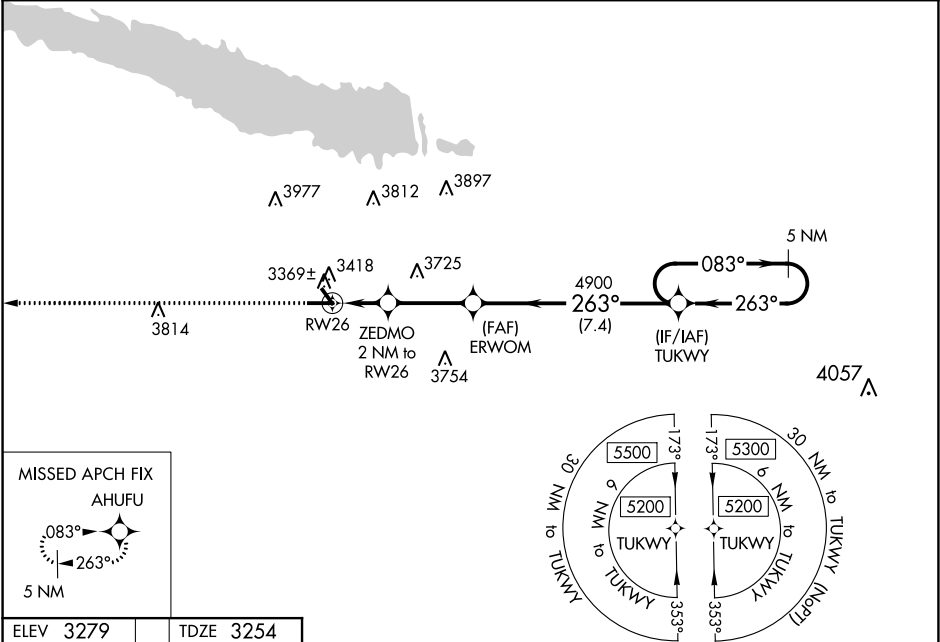
RNP APCH.

▼

When local altimeter setting not received, use Imperial altimeter setting and increase all DA 86 feet and all MDA 100 feet, increase LPV all Cats visibility ¼ mile, LNAV/VNAV all Cats visibility ¼ mile. VDP and Baro-VNAV NA when using Imperial altimeter setting. For uncompensated Baro-VNAV systems, LNAV/VNAV NA below -21°C or above 54°C.

MISSED APPROACH:  
Climb to 5300 direct AHUFU and hold.

AWOS-3 <b>121.275</b>	DENVER CENTER <b>132.7 397.85</b>	UNICOM <b>122.8 (CTAF) 0</b>
--------------------------	--------------------------------------	---------------------------------



ELEV 3279	TDZE 3254
-----------	-----------

5300 AHUFU

\*LNAV only.

RW26

ZEDMO 2 NM to RW26

ERWOM

TUKWY

5 NM Holding Pattern

5102 X 75

2700 X 60

263° to RW26

3900\*

4900

5200

GP 3.00° TCH 48

CATEGORY	A	B	C	D
LPV DA	3504-1	250 (300-1)	NA	NA
LNAV/VNAV DA	3540-1	286 (300-1)	NA	NA
LNAV MDA	3620-1	366 (400-1)	NA	NA
CIRCLING	3920-1 641 (700-1)	3960-1 681 (700-1)	NA	NA