

WAAS  
CH **77809**  
**W16A**

APP CRS  
**163°**

Rwy Idg **4301**  
TDZE **1803**  
Apt Elev **1803**

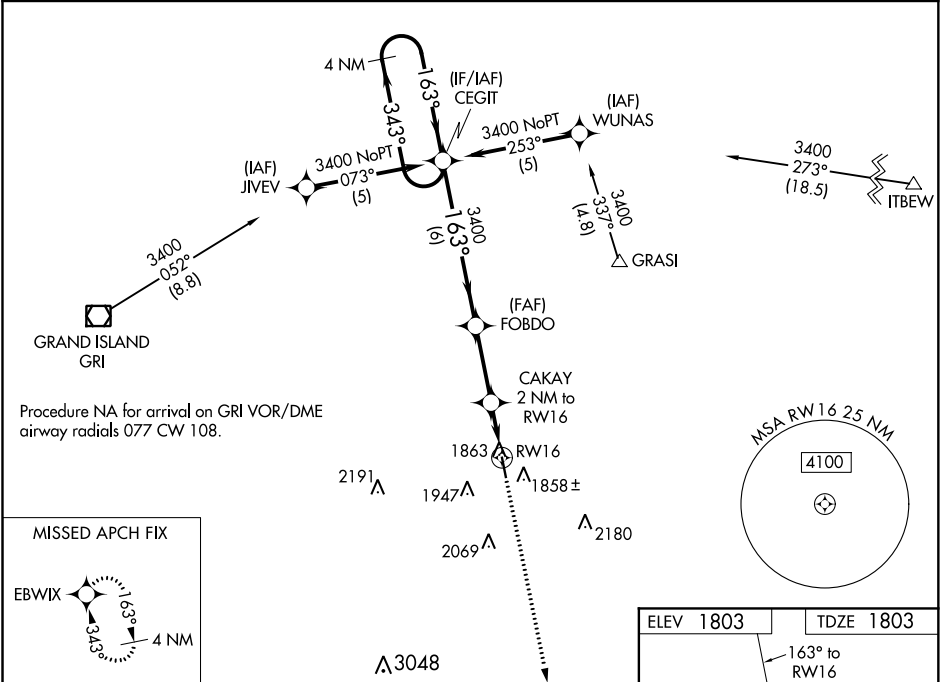
**RNAV (GPS) RWY 16**

AURORA MUNI-AL POTTER FIELD (AUH)

**⚠** Baro-VNAV NA when using Grand Island altimeter setting. For uncompensated Baro-VNAV systems, LNAV/VNAV NA below -18°C (0°F) or above 54°C (130°F). DME/DME RNP-0.3 NA. Visibility reduction by helicopters NA. When local altimeter setting not received, use Grand Island altimeter setting and increase all DA 41 feet and all MDA 60 feet and LPV all Cats visibility ¼ mile. VDP NA when using Grand Island altimeter setting.

**MISSED APPROACH:**  
Climb to 3400 direct EBWIX and hold.

AWOS-3 <b>121.225</b>	MINNEAPOLIS CENTER <b>119.4 278.8</b>	UNICOM <b>122.8 (CTAF) 0</b>
--------------------------	--	---------------------------------



4 NM Holding Pattern

CEGIT

FOBDO

CAKAY 2 NM to RW16

3400

EBWIX

GP 3.00° TCH 40

\*2480

\*1 NM to RW16

RW16

\*LNAV only

CATEGORY	A	B	C	D
LPV DA	2102-1	299 (300-1)		NA
LNAV/VNAV DA	2133-1¼	330 (400-1¼)		NA
LNAV MDA	2160-1	357 (400-1)		NA
<b>CIRCLING</b>	2300-1 497 (500-1)	2340-1 537 (600-1)		NA

ELEV 1803

TDZE 1803

163° to RW16

91

1852 ±

ASD X 75

34

MIRL Rwy 16-34 0