

WAAS CH 65718 W29A	APP CRS 290°	Rwy Idg TDZE Apt Elev	4400 2920 2925
--	------------------------	-----------------------------	---

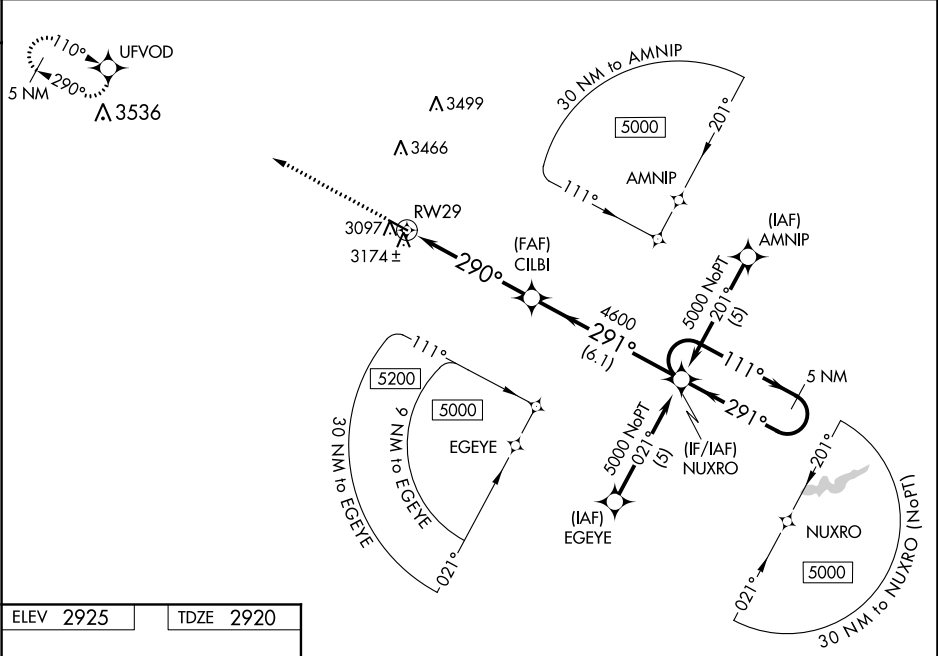
RNAV (GPS) RWY 29

THOMAS COUNTY (TIF')

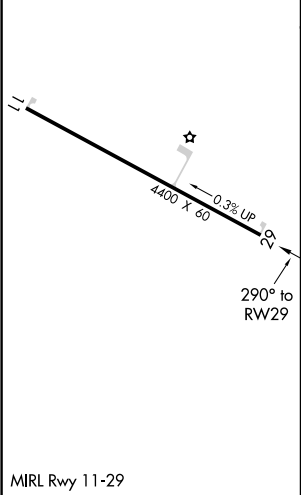
Baro-VNAV NA when using North Platte altimeter setting. For uncompensated Baro-VNAV systems, LNAV/VNAV NA below -20°C (-4°F) or above 54°C (130°F). DME/DME RNP-0.3 NA. When local altimeter setting not received use North Platte altimeter setting and increase all DA 137 feet and all MDA 140 feet; increase LPV and LNAV/VNAV Cats A and B visibility ½ mile. VDP NA with North Platte altimeter setting.




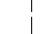
MISSED APPROACH: Climb to 5000 direct UFVOD and hold.

AWOS-3 120.825	DENVER CENTER 127,95 338.2	CTAF 122.9
--------------------------	--------------------------------------	----------------------



ELEV 2925	TDZE 2920
-----------	-----------



5000	UFVOD	NUXRO			5 NM Holding Pattern
					
* LNAV only	* 1.7 NM to RW29	CILBI	4600	291°	111° → 5000
		290°	4600	← 291°	GP 3.00° TCH 40
1.7	3.5 NM	6.1 NM			
CATEGORY	A	B	C	D	
LPV DA	3170-1	250 (300-1)	NA		
LNAV/VNAV DA	3444-2	524 (600-2)	NA		
LNAV MDA	3480-1	560 (600-1)	NA		
CIRCLING	3480-1	555 (600-1)	NA		