

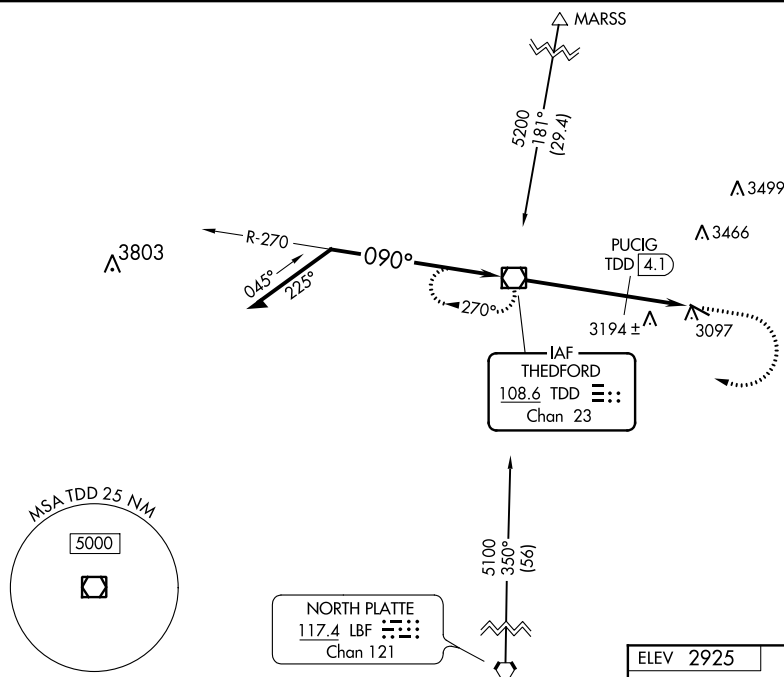
VOR/DME TDD <b>108.6</b> Chan <b>23</b>	APP CRS <b>090°</b>	Rwy Idg <b>4400</b> TDZE <b>2925</b> Apt Elev <b>2925</b>
---	------------------------	---

VOR RWY 11  
THOMAS COUNTY (TIF)

**NA** North Platte altimeter setting and increase all MDA 140 feet, increase S-11 Cat B and Circling Cat B visibility  $\frac{1}{4}$  mile. VDP NA when using North Platte altimeter setting.

**MISSED APPROACH:** Climb to 4000 then climbing right turn to 5100 direct TDD VOR/DME and hold.

AWOS-3 <b>120.825</b>	DENVER CENTER <b>127.95 338.2</b>	CTAF <b>122.9</b>
--------------------------	--------------------------------------	----------------------



The diagram illustrates the PUCIG Fix Minimums. It shows a 5100 ft altitude with a 270° heading, a 090° heading, and a 314° heading. The distance from the 5100 ft altitude to the PUCIG Fix is 4.1 NM. The distance from the PUCIG Fix to the TDD is 0.7 NM. The distance from the TDD to the TDD VOR/DME is 1.6 NM. The diagram also shows a 3640 ft altitude with a 090° heading and a 3640 ft altitude with a 090° heading. The distance from the 3640 ft altitude to the TDD is 1.6 NM. The distance from the TDD to the TDD VOR/DME is 1.6 NM. The diagram also shows a 3640 ft altitude with a 090° heading and a 3640 ft altitude with a 090° heading. The distance from the 3640 ft altitude to the TDD is 1.6 NM. The distance from the TDD to the TDD VOR/DME is 1.6 NM.

CATEGORY	A	B	C	D
S-11	3640-1	715 (800-1)	NA	
CIRCLING	3640-1	715 (800-1)	NA	
PUCIG FIX MINIMUMS				
S-11	3500-1	575 (600-1)	NA	
CIRCLING	3500-1	575 (600-1)	NA	

Diagram illustrating the flight path from FAF to MAP. The path is a straight line with a 0.3% UP slope. The distance from FAF to MAP is 6.4 NM. The path is labeled "090° 6.4 NM from FAF" and "4400 X 60". The path is also labeled "MIRL Rwy 11-29".