

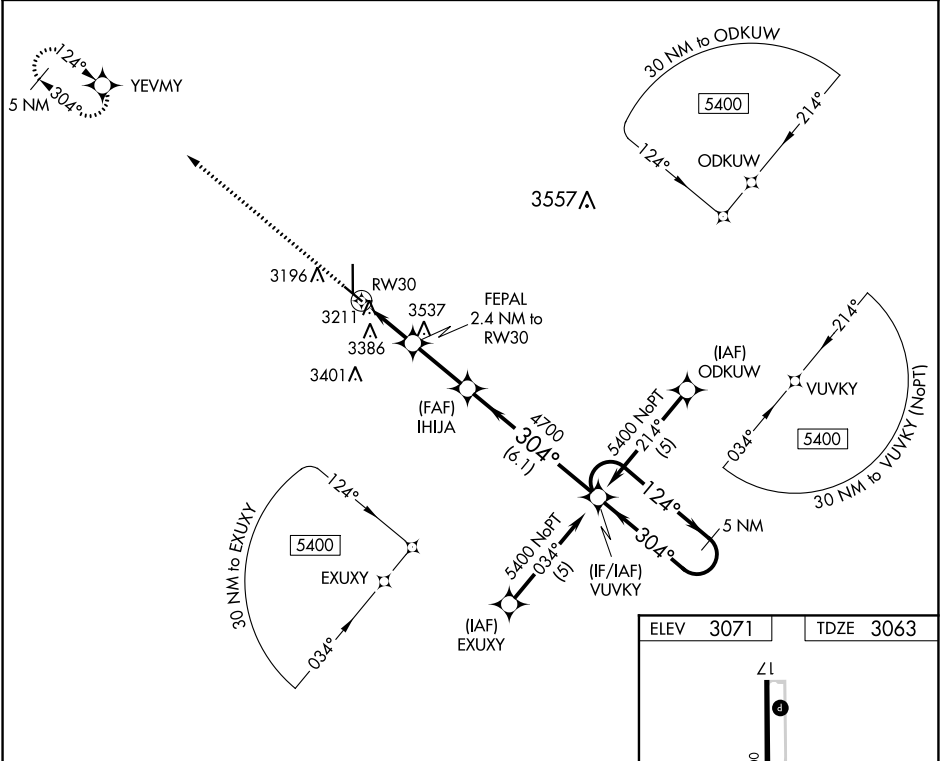
APP CRS	Rwy Idg	4600
304°	TDZE	3063
	Apt Elev	3071

RNAV (GPS) RWY 30

ULYSSES (ULS)

<p>▼ DME/DME RNP-0.3 NA. Helicopter visibility reduction below ¾ SM NA.</p> <p>▲ NA VDP NA with Garden City altimeter setting. When local altimeter setting not received, use Garden City altimeter setting and increase all MDA 120 feet; increase visibility LNAV and Circling Cat C ¼ mile.</p>	<p>MISSED APPROACH: Climb to 5400 direct YEVMY and hold.</p>
--	--

<p>AWOS-3</p> <p>118.95</p>	<p>KANSAS CITY CENTER</p> <p>125.2 269.4</p>	<p>UNICOM</p> <p>122.8 (CTAF) 0</p>
------------------------------------	---	--



5400	YEVMY	VGSI and descent angle not coincident (VGSI Angle 3.00/TCH 35).			
			IHJJA	VUVKY	5 NM Holding Pattern
		FEPAL 2.4 NM to RW30			
		1.8 NM to RW30			
		3.45° TCH 40			
		3980			
		4700			
		124°			
		304°			
		5400			
		1.8 NM	0.6 NM	2.6 NM	6.1 NM
CATEGORY	A	B	C	D	
LNAV MDA	3680-1	617 (700-1)	3680-1¾ 617 (700-1¾)	NA	
CIRCLING	3740-1	669 (700-1)	3900-2½ 829 (900-2½)	NA	

