

WAAS CH 93707 W13A	APP CRS 130°	Rwy Idg TDZE 2503 Apt Elev 2503
--	------------------------	---

RNAV (GPS) RWY 13

COZAD MUNI (CZD)

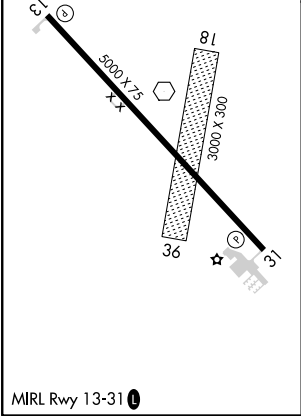
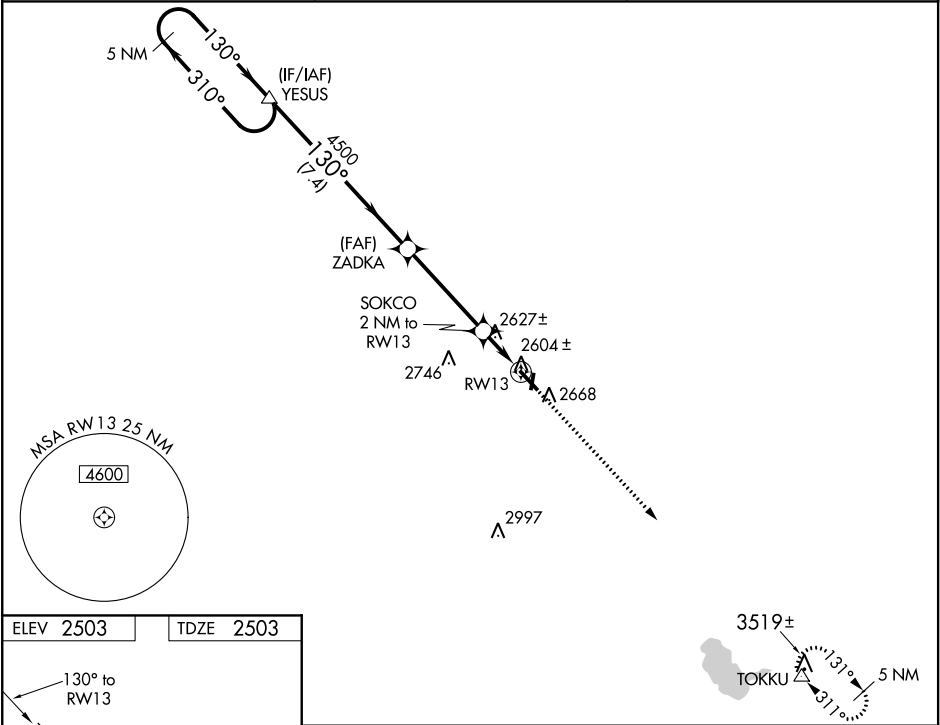
NA

Circling NA to Rwy 18 and 36. Baro-VNAV NA. DME/DME RNP-0.3 NA.

Use Lexington altimeter setting; when not received, use North Platte altimeter setting and increase all DAs 79 feet and LPV and LNAV/VNAV visibility ¼ mile all Cats, increase all MDAs 80 feet and Circling Cat C visibility ¼ mile. Helicopter visibility reduction below ¾ SM NA.

MISSED APPROACH: Climb to 5500 direct TOKKU and hold.

LXN AWOS-3 121.025	DENVER CENTER 132.7 226.675	UNICOM 122.8 (CTAF) 0
------------------------------	---------------------------------------	---------------------------------



5 NM Holding Pattern				YESUS	5500 TOKKU			
5000				310°	ZADKA			
130°				4500	SOKCO 2 NM to RW13			
GP 3.00°				7.4 NM	*3180			
TCH 52				4 NM	RW13			
				2 NM				
CATEGORY	A		B		C		D	
LPV DA	2875-1¼		372 (400-1¼)				NA	
LNAV/VNAV DA	2913-1½		410 (500-1½)				NA	
LNAV MDA	2920-1		417 (500-1)		2920-1¼		NA	
					417 (500-1¼)			
CIRCLING	3080-1		577 (600-1)		3140-1¾		NA	
					637 (700-1¾)			