

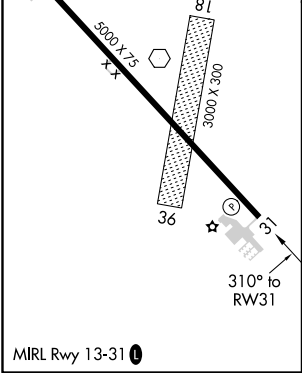
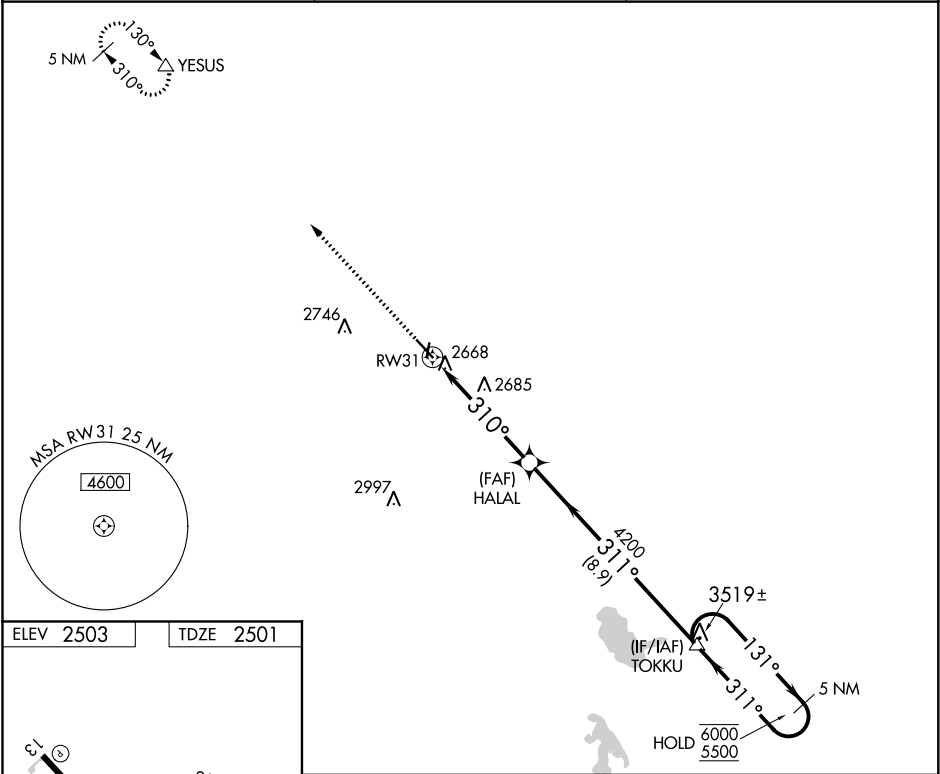
APP CRS	Rwy Idg	5000
310°	TDZE	2501
	Apt Elev	2503

RNAV (GPS) RWY 31

COZAD MUNI (CZD)

RNP APCH.		
▼ Circling NA to Rwy 18 and 36. Rwy 31 helicopter visibility reduction below ¾ SM NA. Use ▲ NA Lexington altimeter setting; when not received, use North Platte altimeter setting and increase all MDAs 80 feet, increase LNAV Cat C visibility ¼ SM and Circling Cat C visibility ¼ SM.	MISSED APPROACH: Climb to 5000 direct YESUS and hold.	

LXN AWOS-3 121.025	DENVER CENTER 132.7 226.675	UNICOM 122.8 (CTAF) 0
-----------------------	--------------------------------	--------------------------



5000	YESUS	Visual Segment - Obstacles.		TOKKU	5 NM Holding Pattern
↑	△	HALAL		131° → 6000	← 311° 5500
RW31		4200		5.2 NM	
310°		311°		8.9 NM	
CATEGORY	A	B	C	D	
LNAV MDA	3040-1	539 (600-1)	3040-1½ 539 (600-1½)	NA	
CIRCLING	3080-1	577 (600-1)	3140-1¾ 637 (700-1¾)	NA	

NC-2, 31 DEC 2020 to 28 JAN 2021

NC-2, 31 DEC 2020 to 28 JAN 2021