

VOR OZB
109.0

APP CRS
123°

Rwy Idg
TDZE
Apt Elev
5000
2502
2502

VOR RWY 13
COZAD MUNI (CZD)

▼

NA

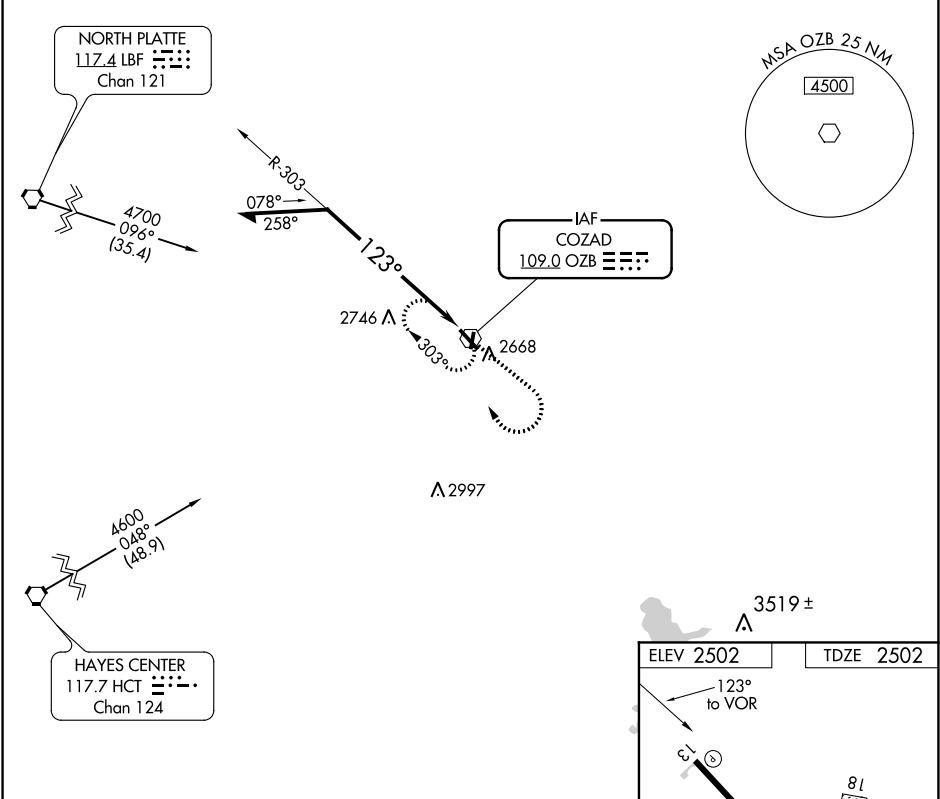
Use Lexington altimeter setting; when not received, use North Platte alimeter setting and increase all MDAs 80 feet; increase Circling Cat C visibility ¼ SM. Circling NA to Rwys 18 and 36. Rwy 13 helicopter visibility reduction below ¾ SM NA.

MISSED APPROACH: Climb to 4500 then right turn direct OZB VOR and hold.

LXN AWOS-3
121.025

DENVER CENTER
132.7 226.675

UNICOM
122.8 (CTAF) 0



Remain within 10 NM

OZB VOR

4500

303°

123°

4500

↑

↻

OZB

CATEGORY	A	B	C	D
S-13	3140-1	638 (700-1)	3140-1¾ 638 (700-1¾)	NA
CIRCLING	3140-1	638 (700-1)	3140-1¾ 638 (700-1¾)	NA

MIRL Rwy 13-31 0