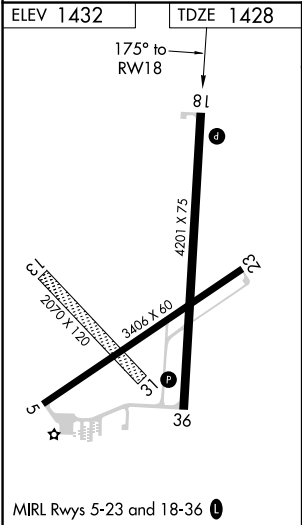
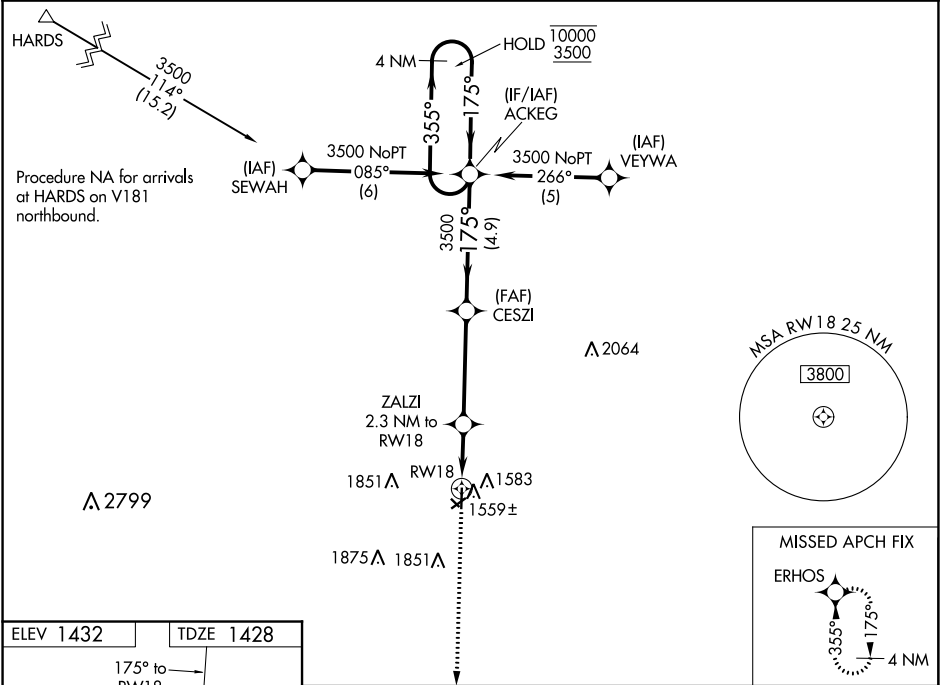


WAAS CH 77513 W18A	APP CRS 175°	Rwy Idg TDZE 1428 Apt Elev 1432
--	------------------------	---

RNAV (GPS) RWY 18
WAYNE MUNI/STAN MORRIS FIELD (L/G)

RNP APCH. ▼ Circling NA to Rwy 13 and 31. For uncompensated Baro-VNAV systems, LNAV/VNAV NA below -17°C or above 54°C. ▲	MISSED APPROACH: Climb to 3500 direct ERHOS and hold.
--	---

AWOS-3 120.125	SIoux CITY APP CON ★ 124.6 307.0	UNICOM 122.8 (CTAF) 0
--------------------------	--	---------------------------------



3500	ERHOS	CESZI	ACKEG	4 NM Holding Pattern
*LNAV only	ZALZI 2.3 NM to RWY 18	3500	175°	355°
1.1 NM to RWY 18	2200	3500	175°	10000
1.1 NM	1.2 NM	4.1 NM	4.9 NM	3500
GP 3.00° TCH 41				
CATEGORY	A	B	C	D
LPV DA	1678-1	250 (300-1)	NA	
LNAV/VNAV DA	1678-1	250 (300-1)	NA	
LNAV MDA	1820-1	392 (400-1)	NA	
CIRCLING	2000-1	568 (600-1)	NA	

NC-2, 31 DEC 2020 to 28 JAN 2021

NC-2, 31 DEC 2020 to 28 JAN 2021