


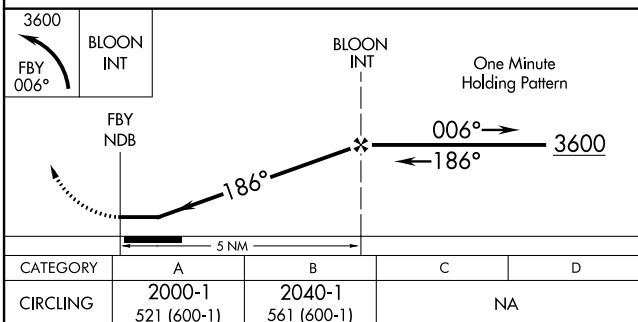
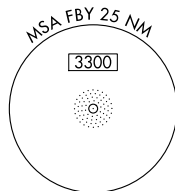
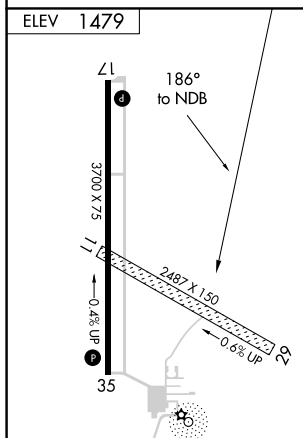
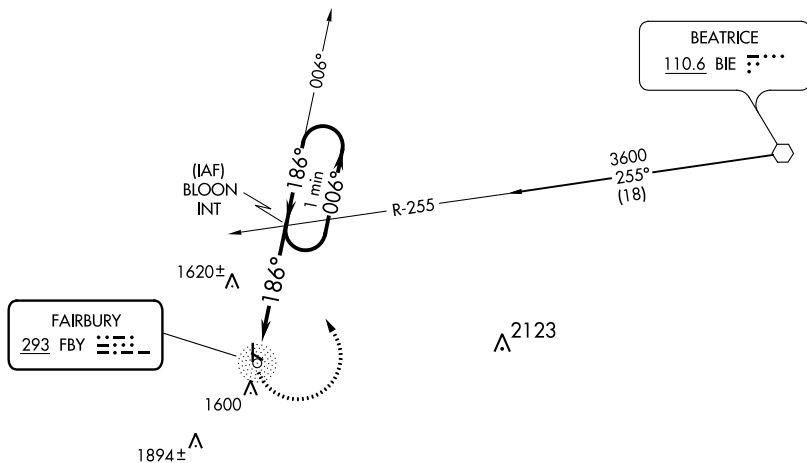
NDB FBY <b>293</b>	APP CRS <b>186°</b>	Rwy Idg TDZE Apt Elev	<b>N/A</b> <b>N/A</b> <b>1479</b>
-----------------------	------------------------	-----------------------------	---

NDB-A  
FAIRBURY MUNI (FBY)

 Use Hebron altimeter setting; when not received, use Beatrice altimeter setting and increase all MDAs 40 feet. Circling NA to Rwy 11 and 29.

**MISSED APPROACH:** Climbing left turn to 3600 via FBY bearing 006° to BLOON INT and hold.

HJH AWOS-3 <b>118.525</b>	MINNEAPOLIS CENTER <b>126.4 317.7</b>	UNICOM <b>122.7</b> (CTAF) <b>0</b>
------------------------------	--	--



FAIRBURY, NEBRASKA  
Amdt 3C 13SEP18

FAIRBURY MUNI (FBY)  
NDB-A

40°11'N-97°10'W

NC-2, 31 DEC 2020 to 28 JAN 2021