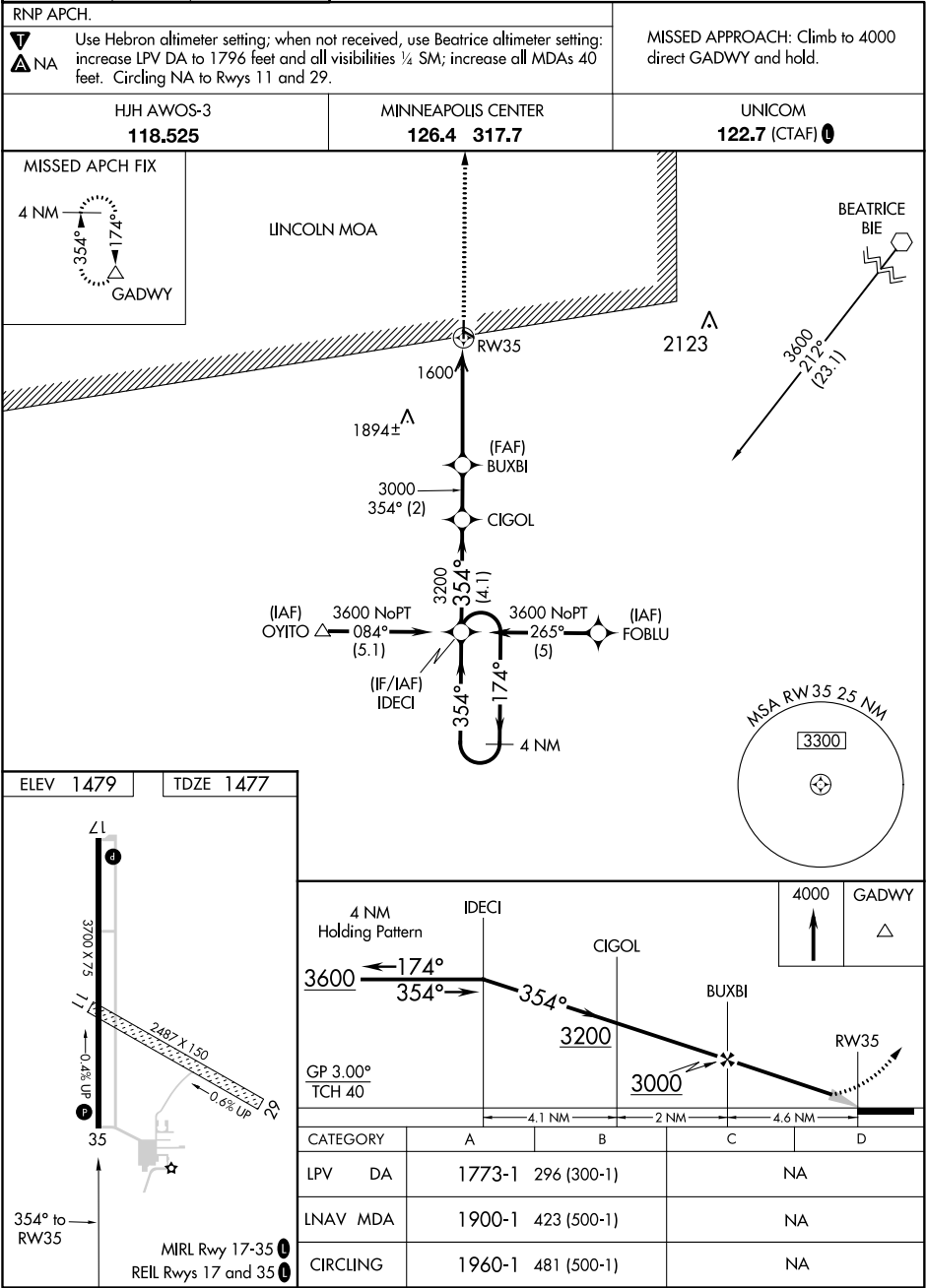


WAAS CH <b>65808</b> <b>W35A</b>	APP CRS <b>354°</b>	Rwy Idg TDZE <b>1477</b> Apt Elev <b>1479</b>
--	------------------------	---

RNAV (GPS) RWY 35

FAIRBURY MUNI (F'BY)



HJH AWOS-3  
**118.525**

MINNEAPOLIS CENTER  
**126.4 317.7**

UNICOM  
**122.7 (CTAF) 0**

MISSED APCH FIX

4 NM

354°

174°

GADWY

LINCOLN MOA

1600

1894±

3000

354° (2)

CIGOL

3200

354°

(4.1)

3600 NoPT

084°

(5.1)

OYITO

(IAF)

3600 NoPT

265°

(5)

FOBLU

(IF/IAF)

IDECI

354°

174°

4 NM

2123

3600

212°

(23.1)

BEATRICE BIE

MSA RW35 25 NM

3300

ELEV 1479

TDZE 1477

3700 X 75

71

0.4% UP

35

2487 X 150

0.6% UP

MIRL Rwy 17-35

REIL Rwys 17 and 35

4 NM Holding Pattern

IDECI

3600

174°

354°

CIGOL

3200

354°

BUXBI

3000

RW35

GP 3.00°

TCH 40

4.1 NM

2 NM

4.6 NM

4000

GADWY

CATEGORY	A	B	C	D
LPV DA	1773-1	296 (300-1)	NA	
LNAV MDA	1900-1	423 (500-1)	NA	
CIRCLING	1960-1	481 (500-1)	NA	

NC-2, 31 DEC 2020 to 28 JAN 2021

NC-2, 31 DEC 2020 to 28 JAN 2021