

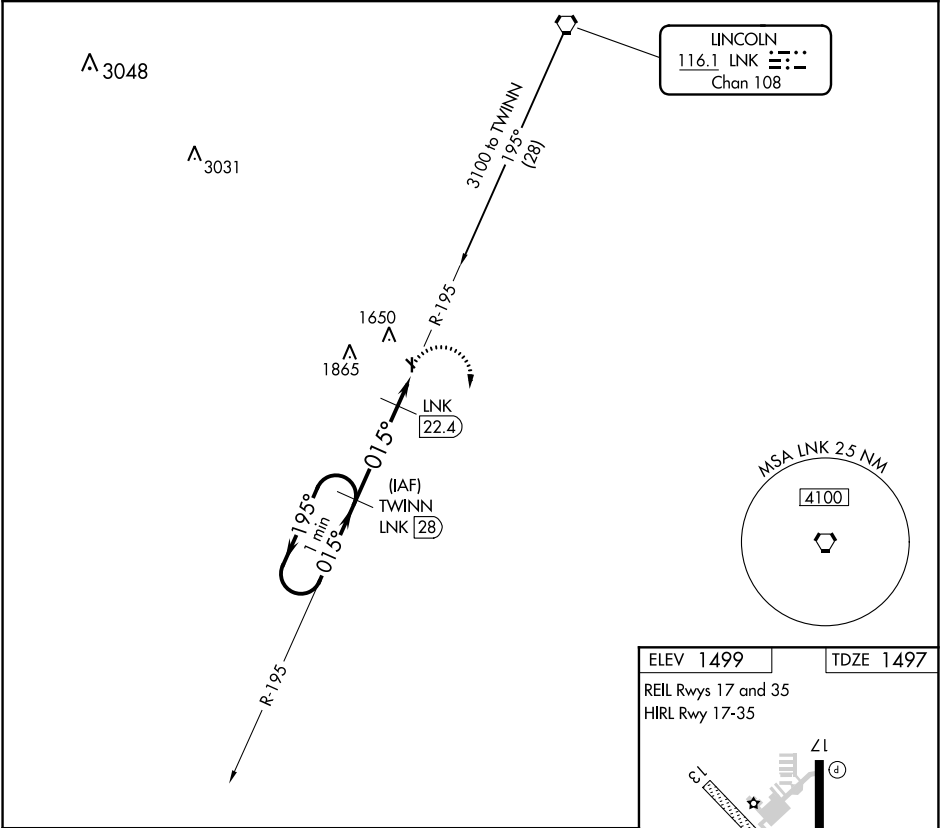
VORTAC LNK <b>116.1</b> Chan <b>108</b>	APP CRS <b>015°</b>	Rwy Idg <b>4201</b> TDZE <b>1497</b> Apt Elev <b>1499</b>
---	------------------------	---

VOR/DME RWY 35  
CRETE MUNI (CEK)

Use Lincoln altimeter setting; when not received, use Beatrice altimeter setting. Visibility reduction by helicopters NA.

MISSED APPROACH: Climbing right turn to 3100 via LNK R-195 to TWINN/LNK 28 DME and hold.

OMAHA APP CON <b>124.0 270.3</b>	UNICOM <b>122.8</b> (CTAF)
-------------------------------------	-------------------------------



One Minute Holding Pattern

3100 ← 195° / 015° →

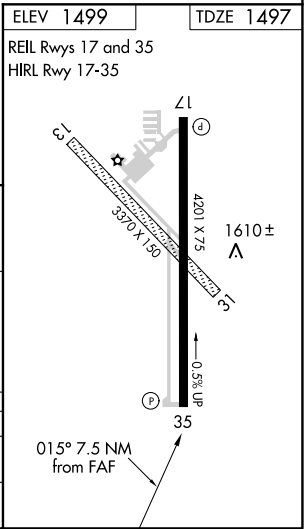
TWINN LNK (28)

3100 LNK R-195 TWINN LNK (28)

2140

5.6 NM 1.9 NM

CATEGORY	A	B	C	D
S-35	2080-1 583 (600-1)	2080-1¼ 583 (600-1¼)	NA	
CIRCLING	2140-1 641 (700-1)	2140-1¼ 641 (700-1¼)	NA	



NC-2, 31 DEC 2020 to 28 JAN 2021

NC-2, 31 DEC 2020 to 28 JAN 2021