

WAAS CH <b>90312</b> <b>W13A</b>	APP CRS <b>131°</b>	Rwy Idg <b>4721</b> TDZE <b>2070</b> Apt Elev <b>2070</b>
--	------------------------	---

RNAV (GPS) RWY 13  
EVELYN SHARP FIELD (ODX)

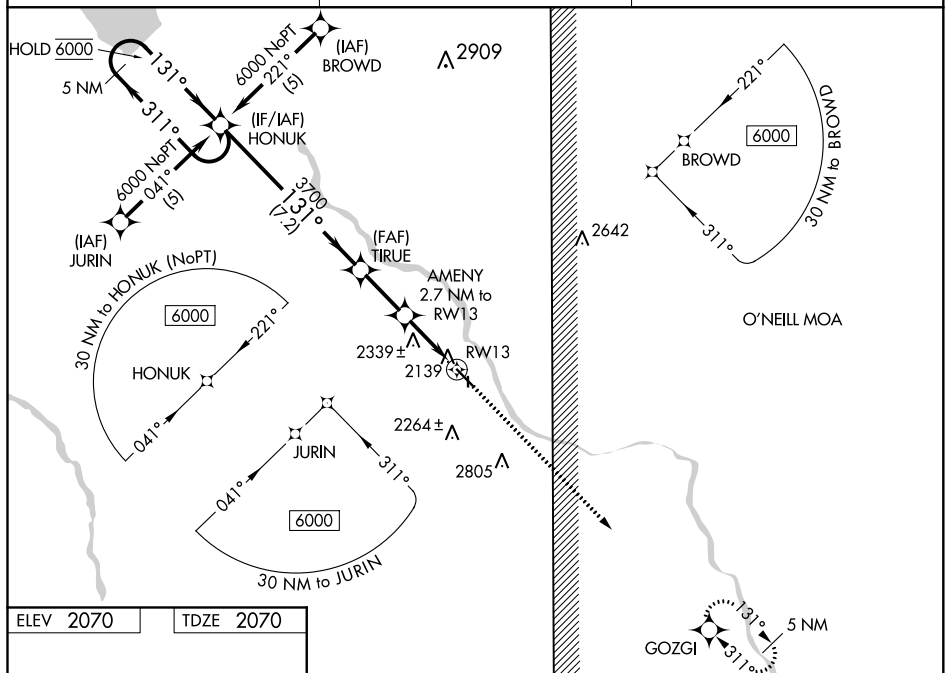
RNP APCH.

**⚠** Circling NA to Rwy 17 and 35. Rwy 13 helicopter visibility reduction below  $\frac{3}{4}$  SM NA. For uncompensated Baro-VNAV systems, LNAV/VNAV NA below -23°C or above 54°C.

**MISSED APPROACH:** Climb to 6000 direct GOZGI and hold, continue climb-in-hold to 6000.

ASOS  
119.925

MINNEAPOLIS CENTER  
119.4 278.8

UNICOM  
122.8 (CTAF) **L**

**HONUK**

5 NM Holding Pattern

6000 ← 311°  
← 131° →

GP 3.00°  
TCH 44

TIRUE  
3700

\*2960

AMENY  
2.7 NM to RW13

\*1.5 NM to RW13

RW13

\* LNNAV only

CATEGORY	A	B	C	D
LPV DA	2376-1	306 (400-1)	NA	
LNNAV/ VNAV DA	2670-1¾	600 (600-1¾)	NA	
LNNAV MDA	2600-1	530 (600-1)	NA	
<b>C</b> CIRCLING	2680-1	610 (700-1)	NA	