

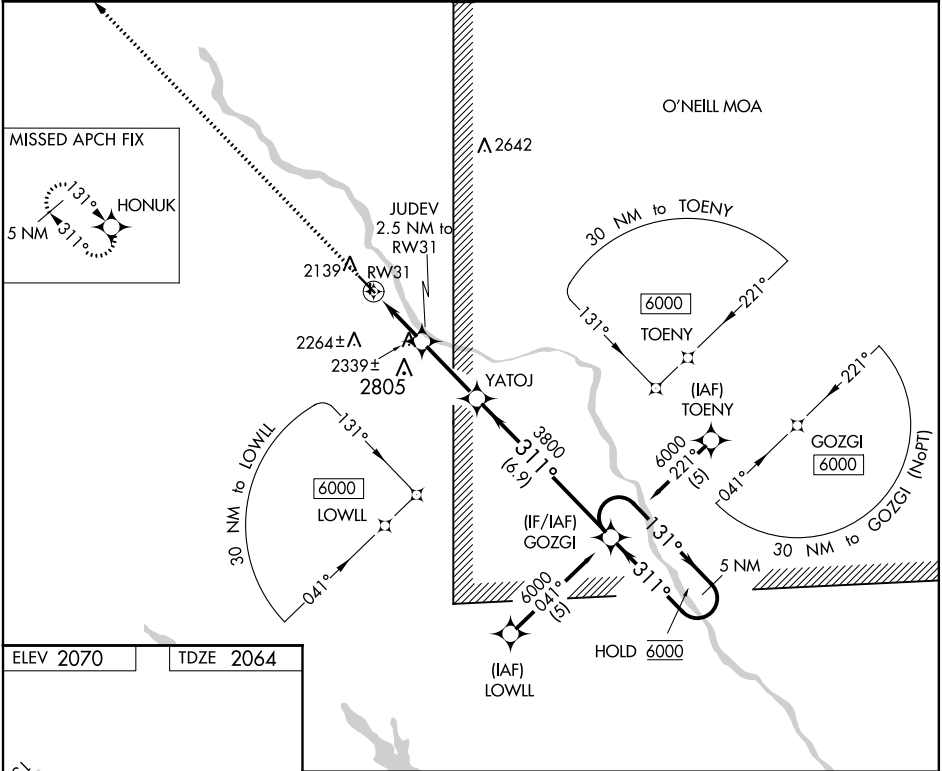


WAAS CH 99412 W31A	APP CRS 311°	Rwy Idg TDZE Apt Elev	4501 2064 2070
--	------------------------	-----------------------------	---

RNAV (GPS) RWY 31

EVELYN SHARP FIELD (ODX)

RNP APCH.		MISSED APPROACH: Climb to 6000 direct HONUUK and hold, continue climb-in-hold to 6000.
 	Circling NA to Rwy 17 and 35. For uncompensated Baro-VNAV systems, LNAV/VNAV NA below -24°C or above 54°C.	
ASOS 119.925	MINNEAPOLIS CENTER 119.4 278.8	UNICOM 122.8 (CTAF) 0



<div> <div>6000</div> <div>↑</div> </div> <div> <div>HONUUK</div> <div>✦</div> </div>	<div> <div>VGSI and RNAV glidepath not coincident (VGSI Angle 3.00/TCH 32).</div> <div>5 NM Holding Pattern</div> </div> <div> <div>GOZGI</div> <div>131° →</div> <div>← 311°</div> <div>6000</div> </div> <div> <div>JUDEV</div> <div>2.5 NM to RW31</div> <div>YATOJ</div> <div>3800</div> </div> <div> <div>*LNAV only</div> <div>*1.6 NM to RW31</div> <div>*2880</div> <div>3800</div> </div> <div> <div>1.6 NM</div> <div>0.9 NM</div> <div>2.8 NM</div> <div>6.9 NM</div> </div>	<div> <div>GP 3.00°</div> <div>TCH 40</div> </div>		
CATEGORY	A	B	C	D
LPV DA	2314-1	250 (300-1)	NA	NA
LNAV/VNAV DA	2616-1 ⁵ / ₈	552 (600-1 ⁵ / ₈)	NA	NA
LNAV MDA	2600-1	536 (600-1)	NA	NA
<div> <div>CIRCLING</div> <div>✎</div> </div>	2680-1	610 (700-1)	NA	NA

MIRL Rwy 13-31

REIL Rwys 13 and 31