

WAAS CH 56334 W15A	APP CRS 154°	Rwy Idg TDZE 1378 Apt Elev 1379
--	------------------------	---

RNAV (GPS) RWY 15

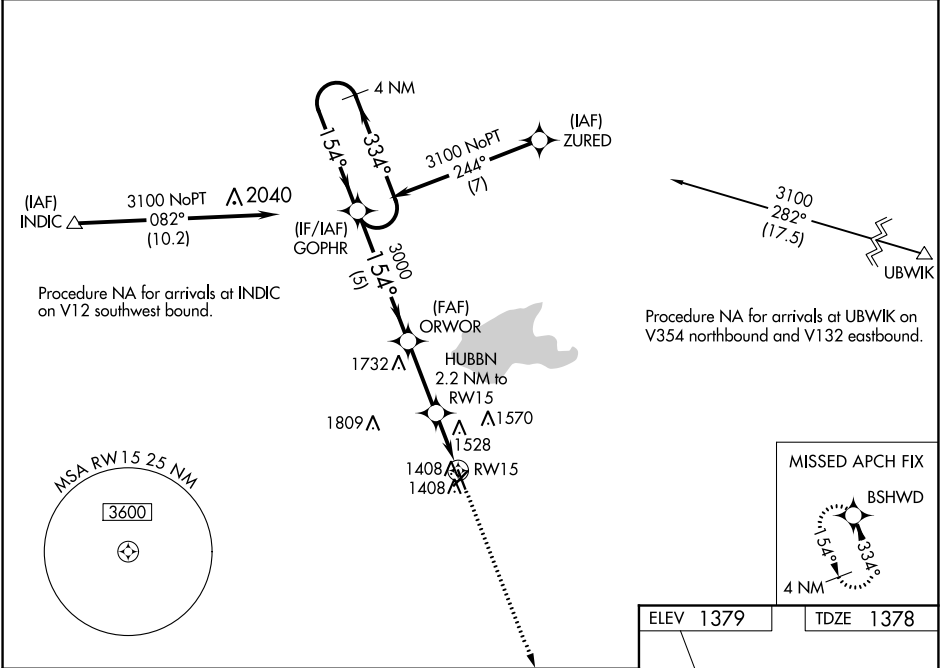
EL DORADO/CAPTAIN JACK THOMAS MEMORIAL (EQA)

⚠ NA

For uncompensated Baro-VNAV systems, LNAV/VNAV NA below -17°C (2°F) or above 54°C (130°F). DME/DME RNP-0.3 NA. Helicopter visibility reduction below ¾ SM NA. When local altimeter setting not received, use Colonel James Jabara altimeter setting and increase all DA 51 feet and all MDA 60 feet; increase LNAV/VNAV all Cats visibility ½ mile. Baro-VNAV and VDP NA when using Colonel James Jabara altimeter setting.

MISSED APPROACH:
Climb to 3100 direct BSHWD and hold.

AWOS-3P 120.875	WICHITA APP CON 134.8 269.1	UNICOM 122.8 (CTAF) 0
---------------------------	---------------------------------------	---------------------------------



4 NM Holding Pattern		VGSI and RNAV glidepath not coincident (VGSI Angle 3.00/TCH 25).		3100 BSHWD
3100 ← 334°		154° →		*LNAV only
GP 3.00°		3000		*1.2 NM to RW15
TCH 40		*2100		RW15
5 NM		2.8 NM		1 NM 1.2 NM
CATEGORY	A	B	C	D
LPV DA	1628-1	250 (300-1)	NA	
LNAV/VNAV DA	1843-1½	465 (500-1½)	NA	
LNAV MDA	1780-1	402 (500-1)	NA	
CIRCLING	1820-1 441 (500-1)	1960-1 581 (600-1)	NA	

