

NDB EHA

377

APP CRS

345°

Rwy Idg

4907

TDZE

3619

Apt Elev

3622

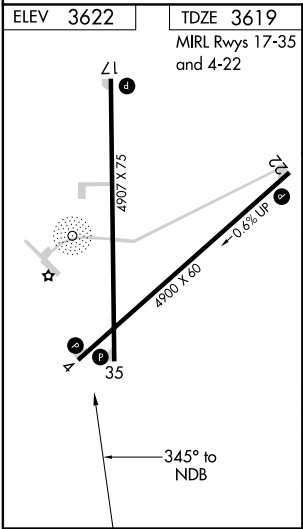
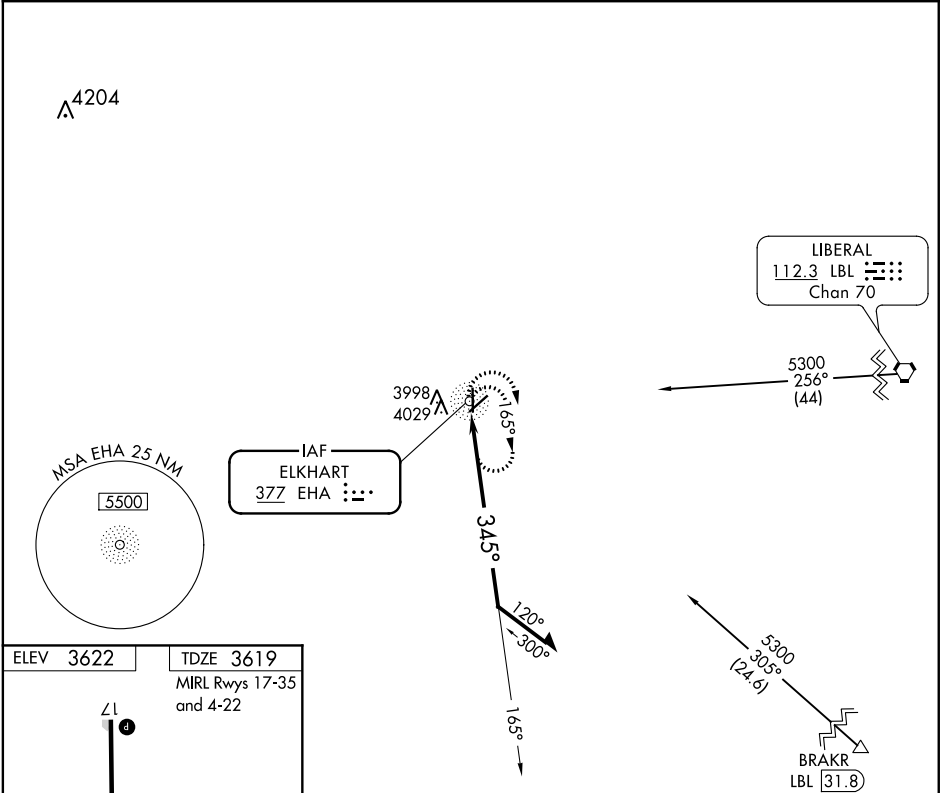
ELKHART-MORTON COUNTY (EHA)

NDB RWY 35

When local altimeter setting not received, use Liberal altimeter setting and increase all MDA 220 feet, increase Cat A and B visibility ¼ mile, and increase Cat C visibility ½ mile.  
Circling Rwy 4, 17, 22 NA at night. Rwy 35 helicopter visibility reduction below ¾ NA.

MISSED APPROACH:  
Climbing right turn to 5300  
in EHA NDB holding pattern.

AWOS-3PT 118.025	KANSAS CITY CENTER 134.0 290.8	UNICOM 122.8 (CTAF) 0
---------------------	-----------------------------------	--------------------------



EHA NDB				
Remain within 10 NM				
CATEGORY	A	B	C	D
S-35	4440-1 821 (900-1)	4440-1¼ 821 (900-1¼)	4440-2½ 821 (900-2½)	NA
CIRCLING	4440-1 818 (900-1)	4440-1¼ 818 (900-1¼)	4440-2½ 818 (900-2½)	NA