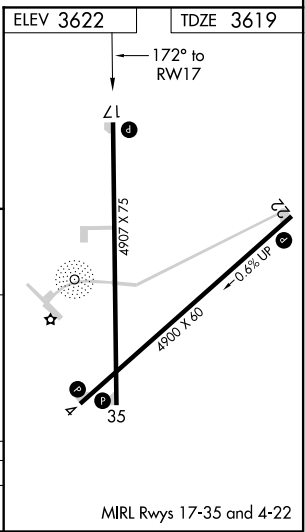
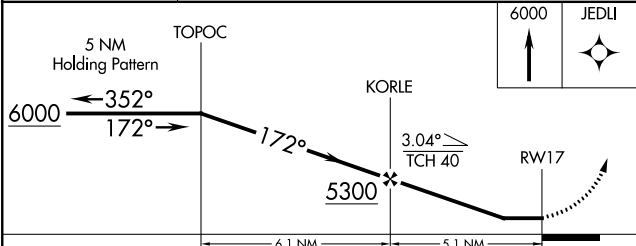
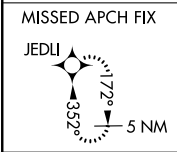
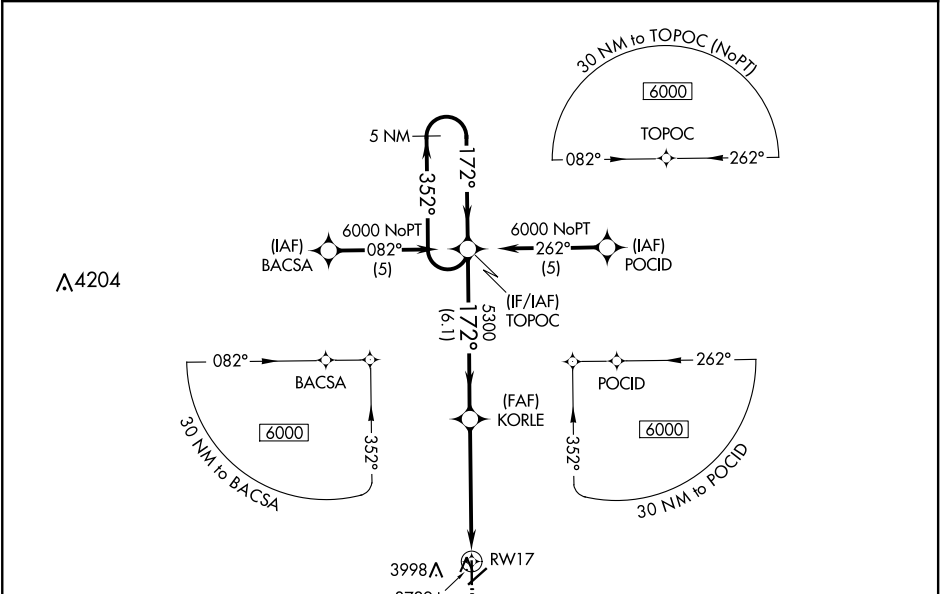


APP CRS	Rwy Idg	4907
172°	TDZE	3619
	Apt Elev	3622

RNAV (GPS) RWY 17  
ELKHART-MORTON COUNTY (EHA)

RNP APCH.	MISSED APPROACH: Climb to 6000 direct JEDLI and hold.
▼ Procedure NA at night. Rwy 17 helicopter visibility reduction below 1 SM NA. ▲ When local altimeter setting not received, use Liberal altimeter setting and increase all MDA 220 feet, increase LNAV Cat B visibility ¼ SM and LNAV Cat C visibility ¾ SM.	

AWOS-3PT 118.025	KANSAS CITY CENTER 134.0 290.8	UNICOM 122.8 (CTAF) 0
---------------------	-----------------------------------	--------------------------



CATEGORY	A	B	C	D
LNAV MDA	4240-1	621 (700-1)	4240-1¾ 621 (700-1¾)	NA

NC-2, 31 DEC 2020 to 28 JAN 2021

NC-2, 31 DEC 2020 to 28 JAN 2021