

WAAS
CH **56507**
W16A

APP CRS
168°

Rwy Idg
TDZE **1505**
Apt Elev **1506**

RNAV (GPS) RWY 16

SEWARD MUNI (SWT)

RNP APCH.

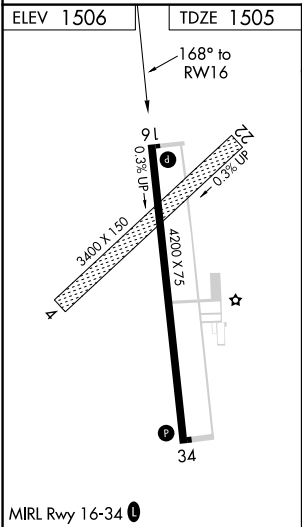
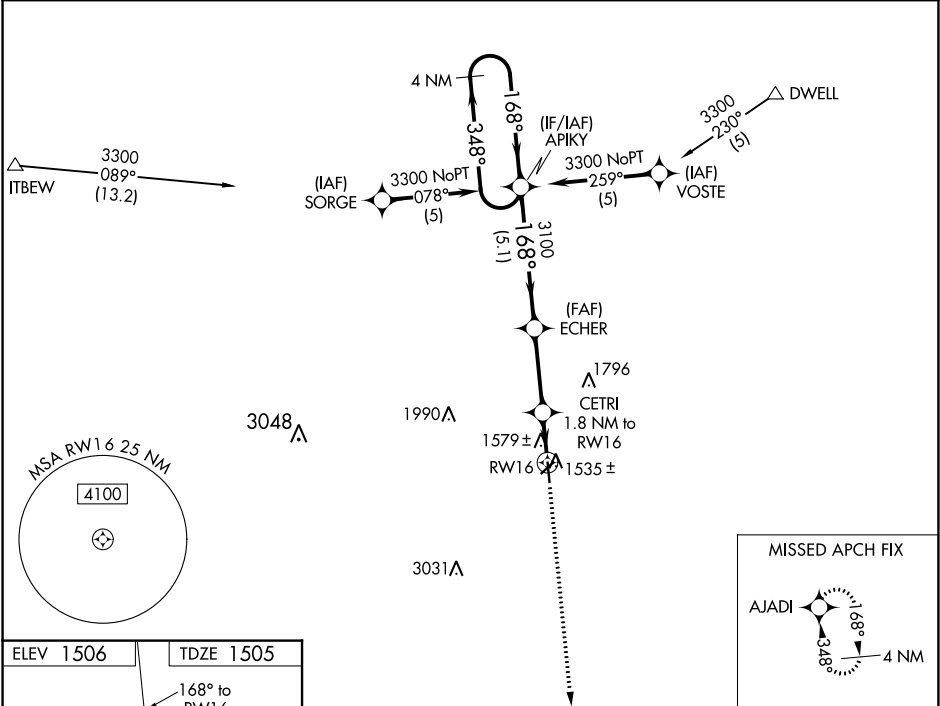
▼

▲ NA

Baro-VNAV NA. Use Lincoln altimeter setting.
Circling NA to Rwy 4 and 22.

MISSED APPROACH: Climb to 3300 direct AJADI and hold.

LNK ASOS 118.05 290.9	OMAHA APP CON 124.0 270.3	UNICOM 122.8 (CTAF) 0
---------------------------------	-------------------------------------	---------------------------------



4 NM Holding Pattern		APIKY		3300		348°		168°		ECHER		3100		168°		CETRI 1.8 NM to RW16		RW16		*LNAV only		3300		AJADI	
GP 3.00° TCH 41				5.1 NM				3.1 NM				*2100		1.8 NM											
CATEGORY		A		B		C		D																	
LPV DA		1832-1¼		327 (400-1¼)																					
LNAV/VNAV DA		1926-1½		421 (500-1½)																					
LNAV MDA		1960-1		455 (500-1)																					
CIRCLING		2020-1		514 (600-1)																					