

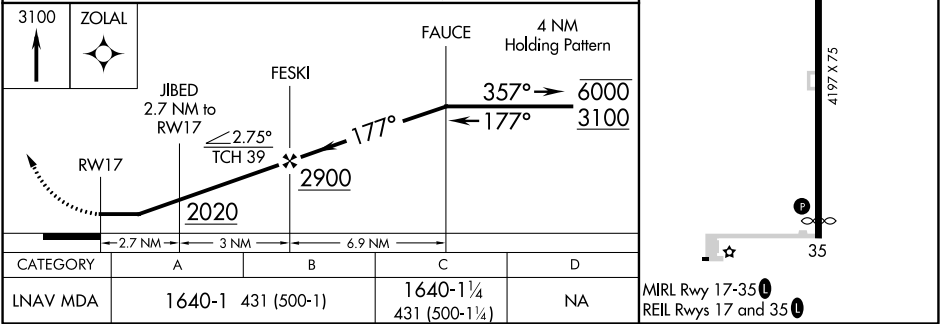
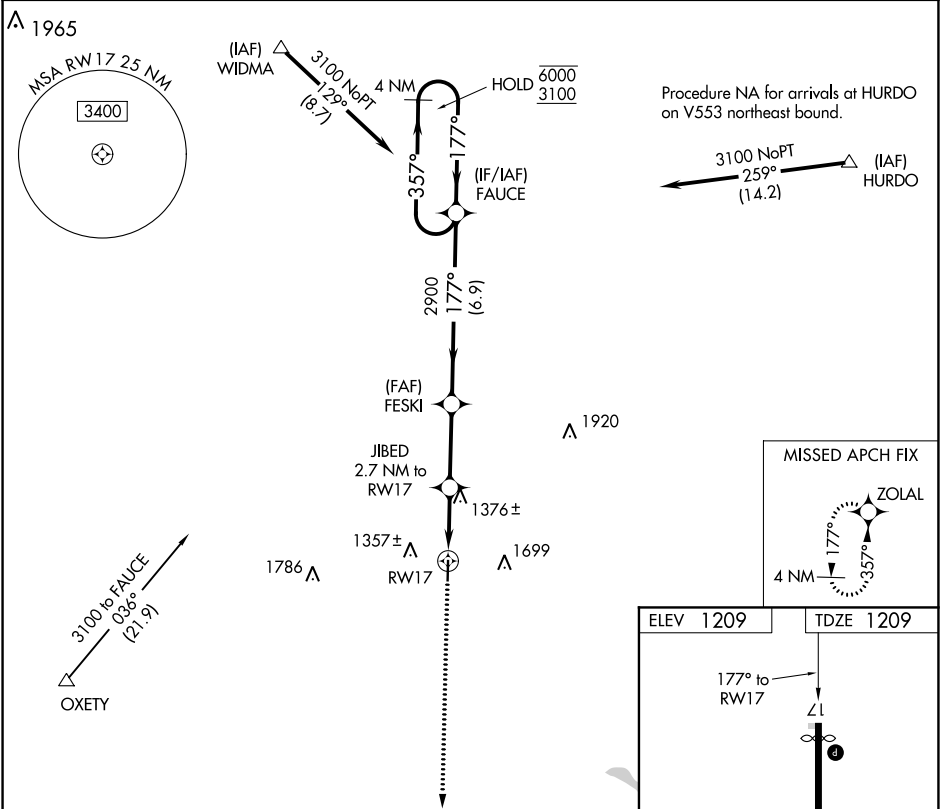
APP CRS	Rwy Idg	3995
177°	TDZE	1209
	Apt Elev	1209

RNAV (GPS) RWY 17

CLAY CENTER MUNI (CYW)

RNP APCH.		MISSED APPROACH: Climb to 3100 direct ZOLAL and hold.
	Procedure NA at night. Rwy 17 helicopter visibility reduction below 1 SM NA. When local altimeter setting not received, use Salina altimeter setting and increase all MDA 120 feet and LNAV Cat C visibility 3/8 SM.	

AWOS-3 119.95	MARSHALL AAF APP CON ★ 121.25 254.35	UNICOM 122.8 (CTAF) 0
------------------	---	--------------------------



NC-2, 31 DEC 2020 to 28 JAN 2021

NC-2, 31 DEC 2020 to 28 JAN 2021