

WAAS CH 86603 W20A	APP CRS 196°	Rwy Idg 5000 TDZE 3132 Apt Elev 3134
--	------------------------	---

RNAV (GPS) RWY 20

HUGOTON MUNI (HQQ)

RNP APCH

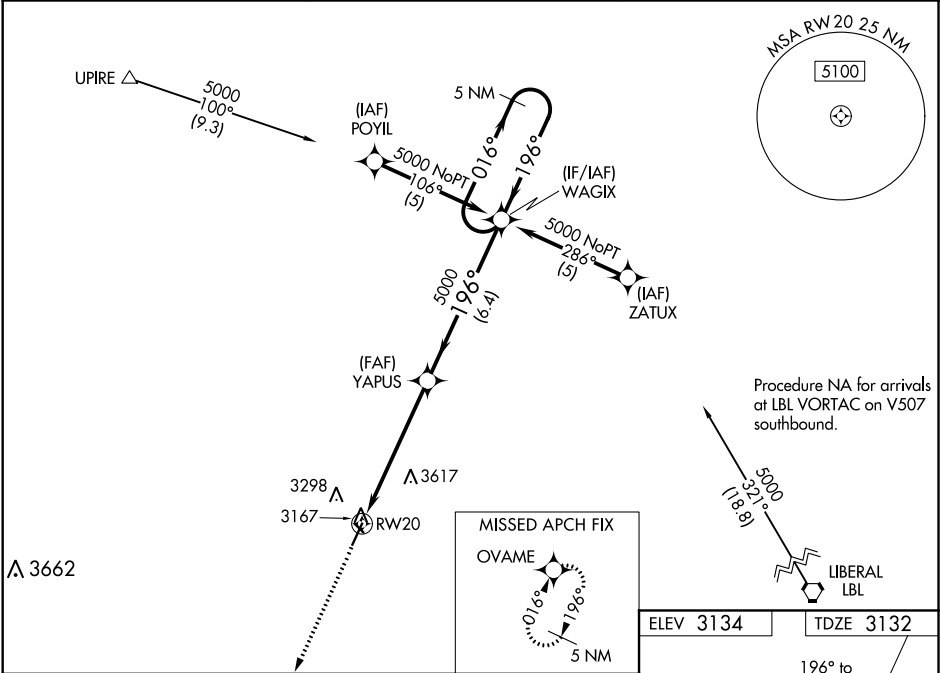
▼

▲

For uncompensated Baro-VNAV systems, procedure NA below -21°C or above 54°C. Circling Rwy 13, 31 NA at night.
Rwy 20 helicopter visibility reduction below ¾ SM NA.

MISSED APPROACH: Climb to 5000 direct OVAME and hold.

AWOS-3PT 118.6	KANSAS CITY CENTER 134.0 257.865	UNICOM 122.8 (CTAF) 0
--------------------------	--	---------------------------------

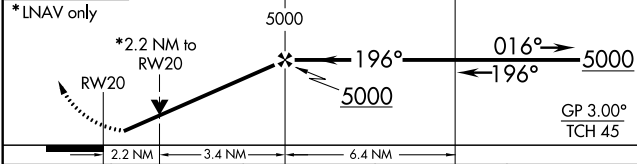


5000

OVAME

VGSI and RNAV glidepath not coincident (VGSI Angle 3.00/TCH 29).

5 NM Holding Pattern



CATEGORY	A	B	C	D
LPV DA	3382-1	250 (300-1)		NA
LNAV/VNAV DA	3437-1	305 (400-1)		NA
LNAV MDA	3860-1	728 (800-1)	3860-2 728 (800-2)	NA
CIRCLING	3860-1	726 (800-1)	3980-2½ 846 (900-2½)	NA

