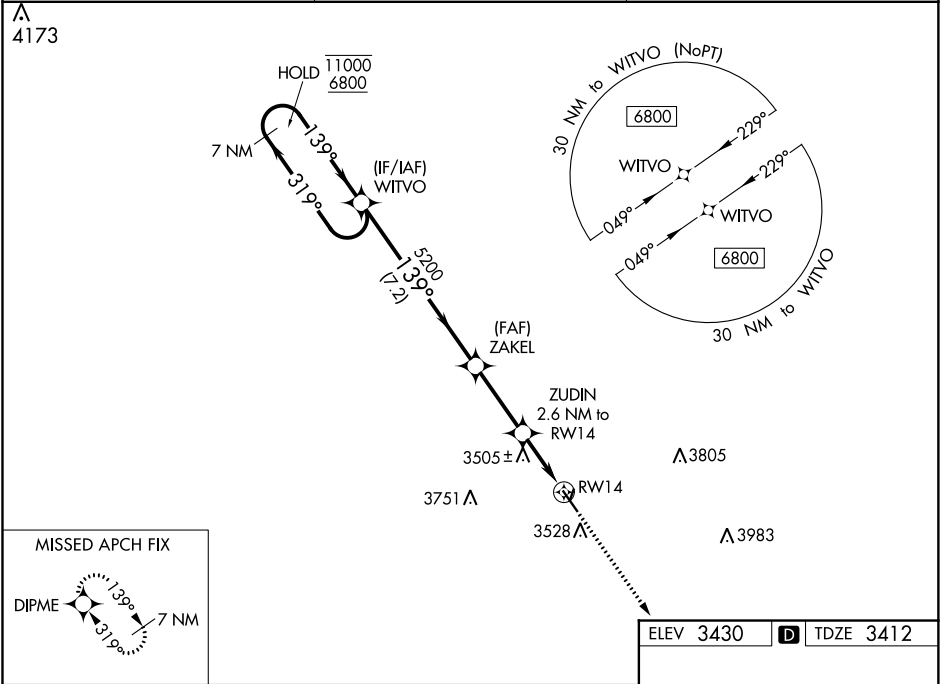


WAAS CH 77942 W14A	APP CRS 139°	Rwy Idg TDZE Apt Elev	5000 3412 3430
--	------------------------	-----------------------------	---

RNAV (GPS) RWY 14
CHEYENNE COUNTY MUNI (SYF)

RNP APCH.	MISSED APPROACH: Climb to 6800 direct DIPME and hold, continue climb-in-hold to 6800.
▽ Circling NA to Rwys 9, 27, 18 and 36. Rwy 14 helicopter visibility reduction below ¾ SM NA. For uncompensated Baro-VNAV systems, LNAV/VNAV NA below -21°C or above 54°C.	

AWOS-3 118,925	DENVER CENTER 132.7 226,675	UNICOM 122.8 (CTAF) ①
--------------------------	---------------------------------------	---------------------------------



7 NM Holding Pattern		WITVO		ZAKEL		ZUDIN 2.6 NM to RW14		RW14	
11000 6800		← 319° 139° →		5200		*1 NM to RW14		*4240	
GP 3.00° TCH 50		7.2 NM		3 NM		1.6 NM		1 NM	
CATEGORY	A	B	C	D					
LPV DA	3662-1		250 (300-1)		NA				
LNAV/VNAV DA	3662-1		250 (300-1)		NA				
LNAV MDA	3760-1		348 (400-1)		NA				
C CIRCLING	3860-1 430 (500-1)		3880-1 450 (500-1)		3900-1½ 470 (500-1½)		NA		

ELEV 3430 **D** TDZE 3412

MIRL Rwy 14-32 ①

NC-2, 31 DEC 2020 to 28 JAN 2021

NC-2, 31 DEC 2020 to 28 JAN 2021