

WAAS CH <b>86733</b> <b>W18A</b>	APP CRS <b>176°</b>	Rwy Idg TDZE Apt Elev	<b>5000</b> <b>2238</b> <b>2238</b>
--	------------------------	-----------------------------	---

RNAV (GPS) RWY 18

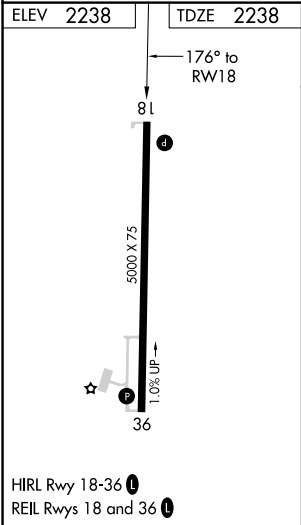
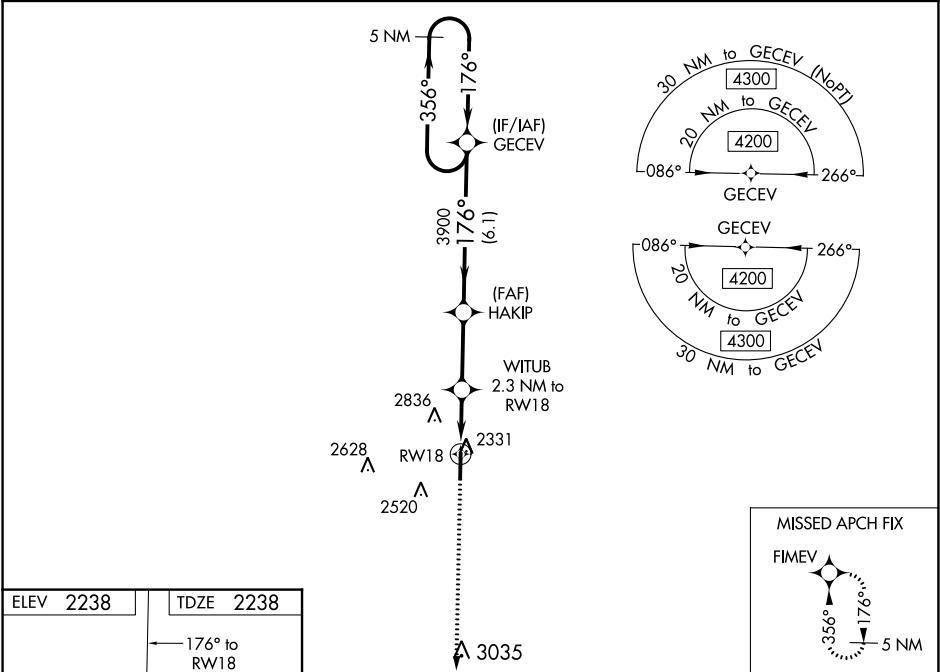
HILL CITY MUNI (HLC)




⚠

For uncompensated Baro-VNAV systems, LNAV/VNAV NA below -24°C (-11°F) or above 54°C (130°F). Circling NA west of Rwy 18-36. DME/DME RNP-0.3 NA. When local altimeter setting not received, use Hays altimeter setting: Increase LPV DA to 2617 feet, LNAV/VNAV DA to 2630 feet, and visibility LPV all Cats ¼ mile, LNAV/VNAV all Cats ⅜ mile; Increase all MDA 140 feet and visibility LNAV Cat C ⅜ mile and Circling Cat C ¼ mile. Night landing: Rwy 18 NA. Helicopter visibility reduction below 1 SM NA. Baro-VNAV NA when using Hays altimeter setting.

MISSED APPROACH:  
Climb to 4200 direct FIMEV and hold.

ASOS <b>118.425</b>	DENVER CENTER <b>132.7 226.675</b>	CTAF <b>122.9</b>
------------------------	---------------------------------------	----------------------



4200	FIMEV				
					
*LNAV only	WITUB 2.3 NM to RW18	HAKIP 3900	GECEV	5 NM Holding Pattern	4200
		3900	176°	356° → ← 176°	
	RW18	3000*			GP 3.00° TCH 40
	2.3 NM	2.8 NM	6.1 NM		
CATEGORY	A	B	C	D	
LPV DA	2488-1		250 (300-1)		NA
LNAV/ VNAV	2501-1		263 (300-1)		NA
LNAV MDA	2600-1		362 (400-1)		NA
 CIRCLING	2640-1 402 (500-1)	2700-1 462 (500-1)	2700-1½ 462 (500-1½)		NA