

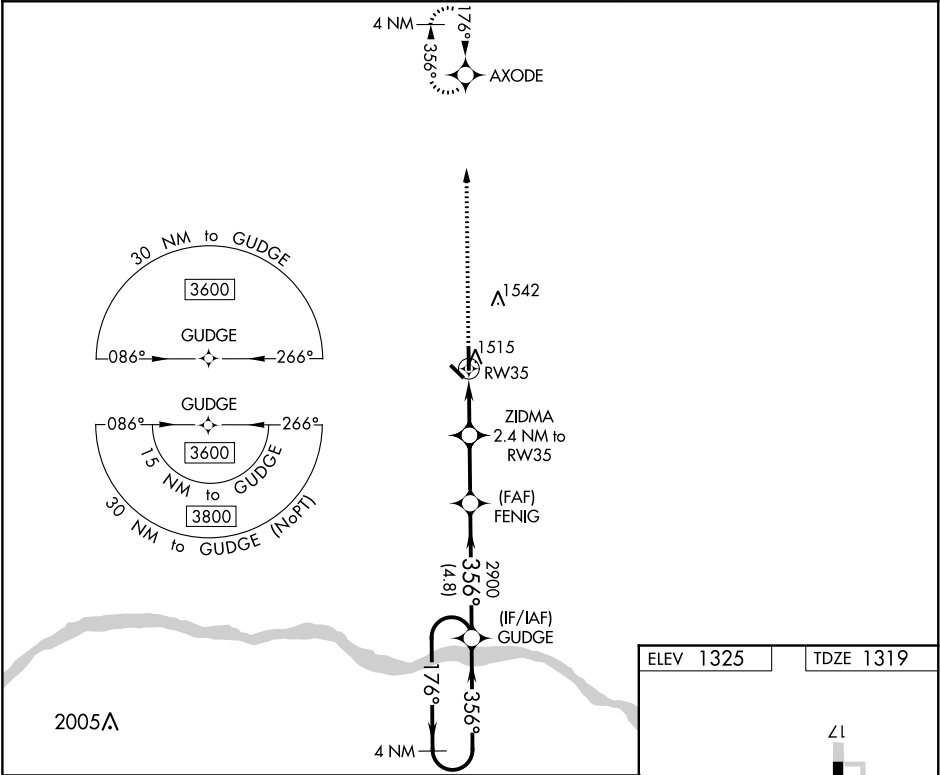
WAAS CH 62934 W35A	APP CRS 356°	Rwy Idg 4200 TDZE 1319 Apt Elev 1325
--	------------------------	---


RNAV (GPS) RWY 35

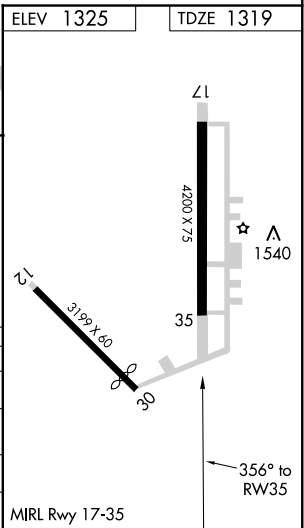
SCRIBNER STATE (SCB)

<div><div><div>NA</div></div></div> <div>DME/DME RNP-0.3 NA. Use Fremont altimeter setting, when not received use Wahoo altimeter setting and increase all DA 24 feet and all MDA 40 feet. Helicopter visibility reduction below ¾ SM NA. Baro-VNAV NA.</div>	MISSED APPROACH: Climb to 3300 direct AXODE and hold.
---	---

FET AWOS-3 121.275	OMAHA APP CON 120.1 354.05	CTAF 122.9
------------------------------	--------------------------------------	----------------------



<div><div><div>3300</div></div><div><div>AXODE</div></div></div> <div><div>*LNAV only.</div><div><div>RW35</div></div></div>		<div><div>ZIDMA</div><div>2.4 NM to RW35</div></div> <div><div>FENIG</div><div>2900</div></div> <div><div>GUDGE</div><div>3600</div></div>				<div><div>4 NM Holding Pattern</div><div>176°</div><div>356°</div><div>3600</div></div> <div><div>GP 3.00°</div><div>TCH 40</div></div>		
<div><div>2120*</div><div>2900</div></div>		<div><div>2.4 NM</div><div>2.4 NM</div><div>4.8 NM</div></div>						
CATEGORY		A		B		C		D
LPV DA	DA	1606-1	287 (300-1)				NA	
LNAV/VNAV DA	DA	1744-1½	425 (500-1½)				NA	
LNAV MDA		1840-1	521 (600-1)				NA	
 CIRCLING		1900-1	575 (600-1)				NA	



NC-2, 31 DEC 2020 to 28 JAN 2021

NC-2, 31 DEC 2020 to 28 JAN 2021