

WAAS CH 82432 W18A	APP CRS 176°	Rwy Idg TDZE 1999 Apt Elev 1999
--	------------------------	---

RNAV (GPS) RWY 18

ROOKS COUNTY RGNL (RCP)

▼

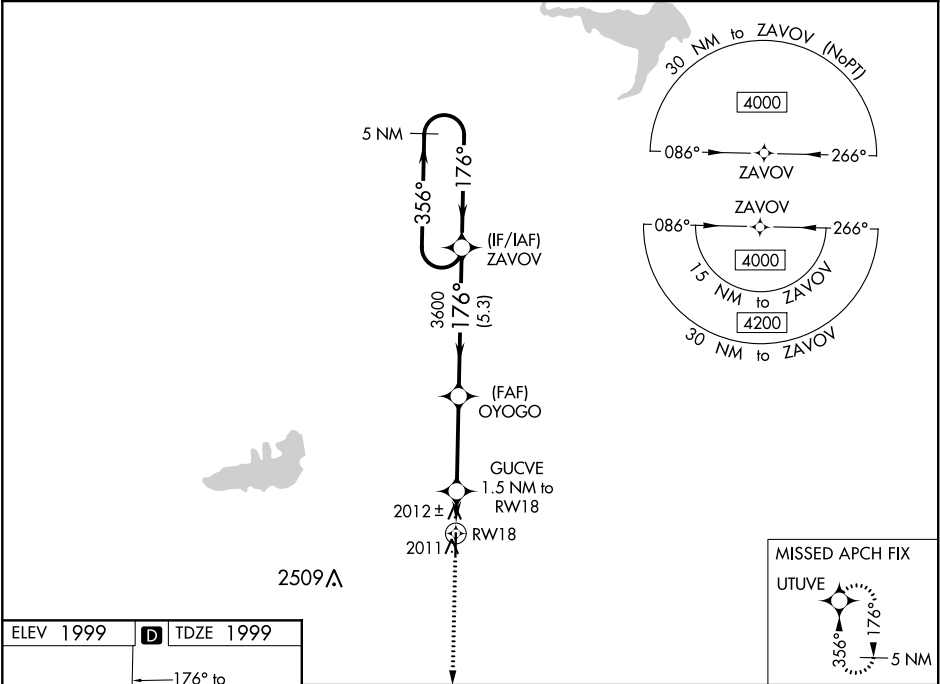
▲

NA

Baro-VNAV NA. Use Hill City altimeter setting; when not received, use Hays altimeter setting. Circling NA west of Rwy 18-36.
DME/DME RNP-0.3 NA.

MISSED APPROACH: Climb to 6000 direct UTUVE and hold, continue climb-in-hold to 6000.

AWOS-AV 120.075	HLC ASOS 118.425	DENVER CENTER 132.7 226.675	CTAF 122.9
---------------------------	----------------------------	---------------------------------------	----------------------



ELEV 1999	D	TDZE 1999
81	④	176° to RW18
5000 X 75		
36	⑤	
MIRL Rwy 18-36		
REIL Rws 18 and 36		

6000	UTUVE	OYOGO	ZAVOV	5 NM Holding Pattern
*LNAV only.	GUCVE 1.5 NM to RW18	3600	176°	356° → 4000
RW18	2500*	3600	176°	← 176°
1.5 NM	3.4 NM	5.3 NM		GP 3.00° TCH 40
CATEGORY	A	B	C	D
LPV DA	2290-1	291 (300-1)		NA
LNAV/VNAV DA	2340-1½	341 (400-1½)		NA
LNAV MDA	2360-1	361 (400-1)		NA
C CIRCLING	2460-1 461 (500-1)	2480-1 481 (500-1)	2500-1½ 501 (600-1½)	NA