

WAAS CH 40232 W36A	APP CRS 356°	Rwy Idg TDZE 1999 Apt Elev 1999
--	------------------------	---

RNAV (GPS) RWY 36

ROOKS COUNTY RGNL (RCP)

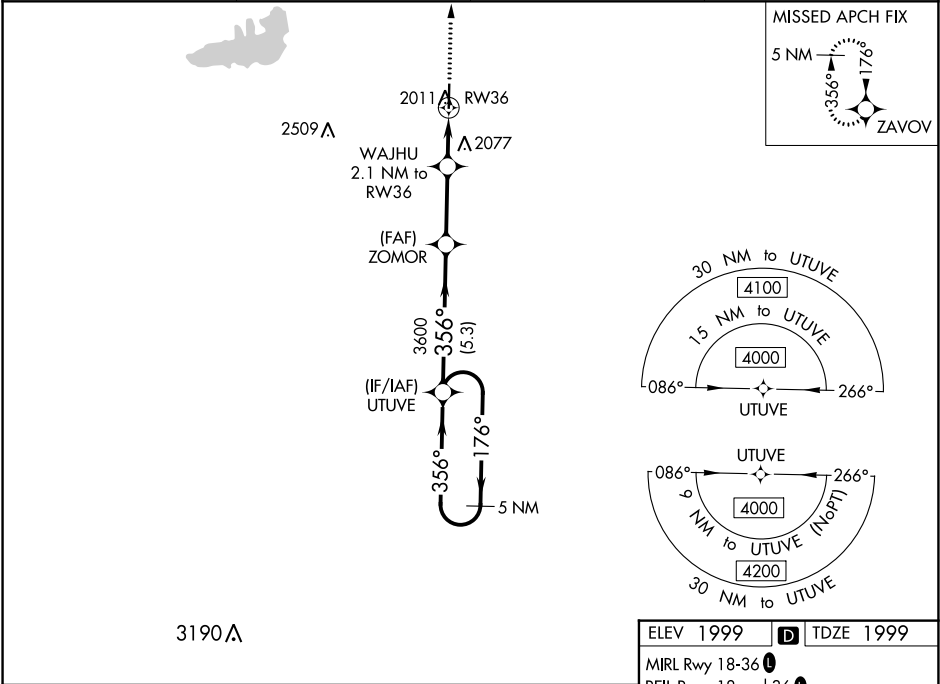
▼

▲ NA

Baro-VNAV NA. Use Hill City alimeter setting; when not received, use Hays Rgnl alimeter setting. Circling NA west of Rwy 18-36.
DME/DME RNP-0.3 NA.

MISSED APPROACH: Climb to 6000 direct ZAVOV and hold, continue climb-in-hold to 6000.

AWOS-AV 120,075	HLC ASOS 118,425	DENVER CENTER 132.7 226.675	CTAF 122.9
---------------------------	----------------------------	---------------------------------------	----------------------



5 NM Holding Pattern

UTUVE

6000 ZAVOV

GP 3.00° TCH 40

356° 176° 356° 3600 3600 2680 2.1 NM 2.8 NM 5.3 NM

WAJHU 2.1 NM to RW36

*LNAV only.

RW36

CATEGORY	A	B	C	D
LPV DA	2290-1 291 (300-1)			NA
LNAV/VNAV DA	2340-1½ 341 (400-1½)			NA
LNAV MDA	2420-1 421 (500-1)		2420-1¼ 421 (500-1¼)	NA
CIRCLING	2460-1 461 (500-1)	2480-1 481 (500-1)	2500-1½ 501 (600-1½)	NA

