

WAAS CH 45535 W30A	APP CRS 299°	Rwy Idg TDZE 697 Apt Elev 698
--	------------------------	---

RNAV (GPS) RWY 30

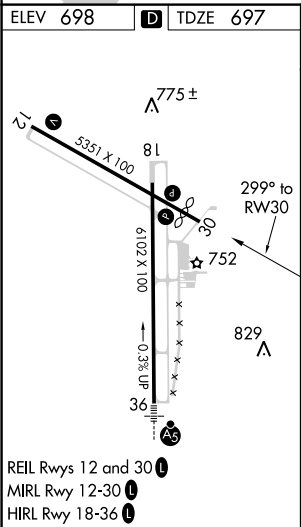
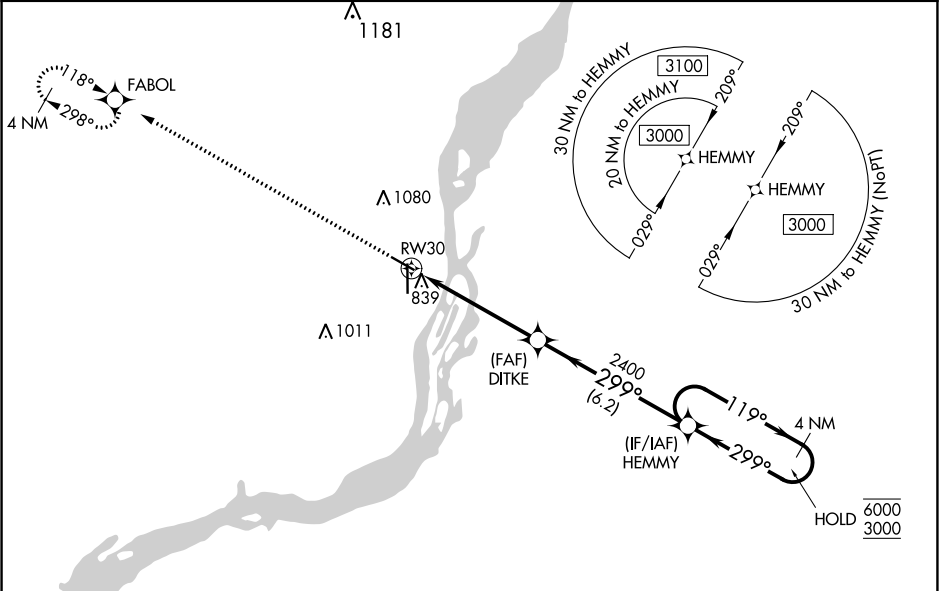
SOUTHEAST IOWA RGNL (B.R.L.)

RNP APCH.

Rwy 30 helicopter visibility reduction below ¾ SM NA.
For uncompensated Baro-VNAV systems, procedure NA
below -21°C or above 54°C.

MISSED APPROACH: Climb to 3000
direct FABOL and hold.

ASOS 118.025	CHICAGO CENTER 135.6 370.95	UNICOM 123.0 (CTAF)
------------------------	---------------------------------------	-------------------------------



3000	FABOL	VGSIs and descent angles not coincident (VGSi Angle 3.00/TCH 30).			
*LNAV only		DITKE	HEMMY	4 NM Holding Pattern	
*1.2 NM to RWY 30		2400	299°	119°	6000 3000
RWY 30		2400	299°	299°	GP 3.00° TCH 40
1.2		4 NM	6.2 NM		
CATEGORY	A	B	C	D	
LPV DA	995-1 298 (300-1)				NA
LNAV/VNAV DA	989-1 292 (300-1)				NA
LNAV MDA	1100-1	403 (500-1)	1100-1 ½ 403 (500-1 ½)		NA
CIRCLING	1180-1	482 (500-1)	1380-2 682 (800-2)		NA