


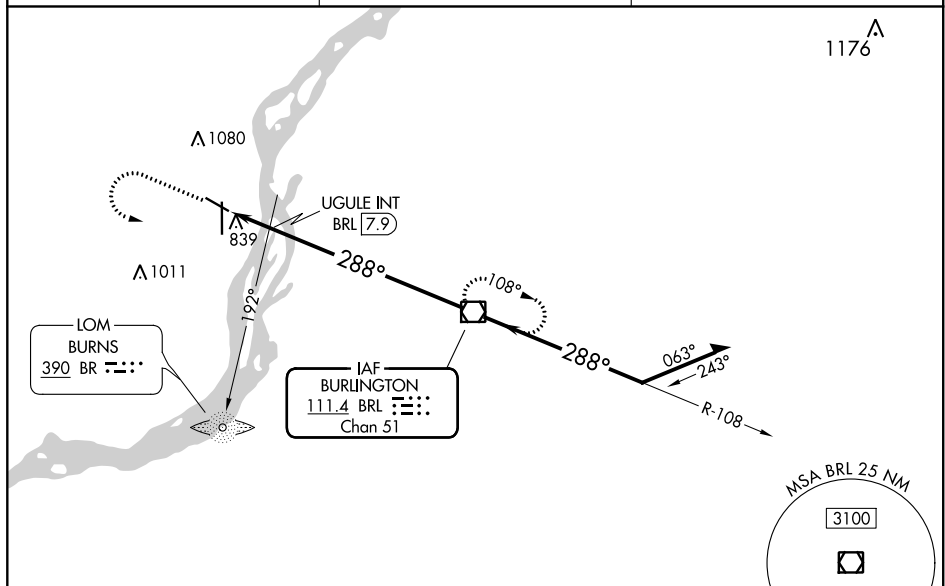
VOR/DME BRL 111.4 Chan 51	APP CRS 288°	Rwy Idg 4850 TDZE 697 Apt Elev 698
---	------------------------	---

VOR RWY 30
SOUTHEAST IOWA RGNL (BRL)

 -28°C/-18°F Rwy 30 helicopter visibility reduction below $\frac{3}{4}$ SM NA.

MISSED APPROACH: Climb to 2000 then climbing left turn to 3000 direct BRL VOR/DME and hold.

ASOS 118.025	CHICAGO CENTER 135.6 370.95	UNICOM 123.0 (CTAF) ①
------------------------	---------------------------------------	---------------------------------



NC-3, 31 DEC 2020 to 28 JAN 2021

ELEV 698

D

TDZE 697

775 ±

5.351 X 100

81

288° 9.6 NM
from FAF

6102 X 100

752

829

36

0.3% UP

A5

REIL Rwy 12 and 30

MIRL Rwy 12-30

HIRL Rwy 18-36

FAF to MAP 9.6 NM					
Knots	60	90	120	150	180
Min:Sec	9:36	6:24	4:48	3:50	3:12

