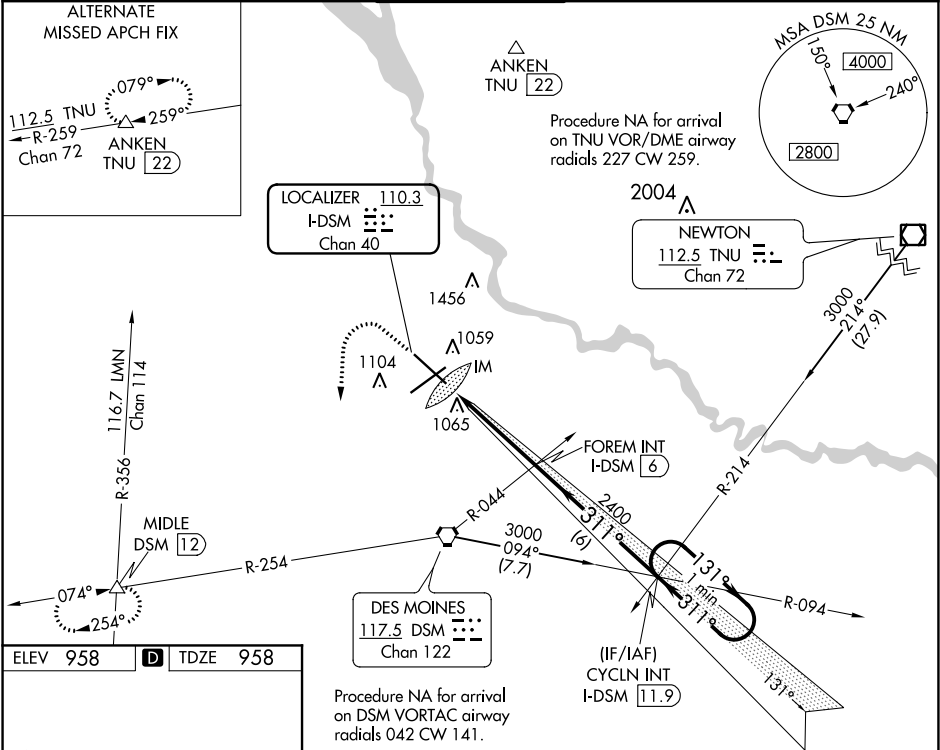


LOC/DME I-DSM 110.3 Chan 40	APP CRS 311°	Rwy Idg TDZE Apt Elev	9001 958 958
-------------------------------------------------	------------------------	-----------------------------	-----------------------------------------

ILS RWY 31 (CAT II & III)
DES MOINES INTL (DSM)

MISSED APPROACH: Climb to 1600 then climbing left turn to 3000 on heading 180° on DSM VORTAC R-254 to MIDDLE INT/12 DME and hold.

ATIS 119.55	DES MOINES APP CON 123.9 307.15	DES MOINES TOWER 118.3 257.8	GND CON 121.9 348.6	CLNC DEL 134.15 317.55
-----------------------	-------------------------------------------	----------------------------------------	-------------------------------	----------------------------------



ELEV 958 **D** TDZE 958

REIL Rwy 23
TDZ/CL Rwy 31
HIRL Rws 13-31 and 5-23

1600	3000	MIDDLE	VGSI and ILS glidepath not coincident (VGSI Angle 3.00/TCH 56).	One Minute Holding Pattern
↑	hdg 180°	DSM R-254	FOREM INT I-DSM 6	CYCLN INT I-DSM 11.9
			GS 3.00° TCH 52	
CATEGORY	A	B	C	D
S-ILS 31	CAT II RA 101/12		100 DA 1058	
S-ILS 31	CAT III RVR 06			

CATEGORY II & III ILS - SPECIAL AIRCREW & AIRCRAFT CERTIFICATION REQUIRED

NC-3, 31 DEC 2020 to 28 JAN 2021

NC-3, 31 DEC 2020 to 28 JAN 2021