

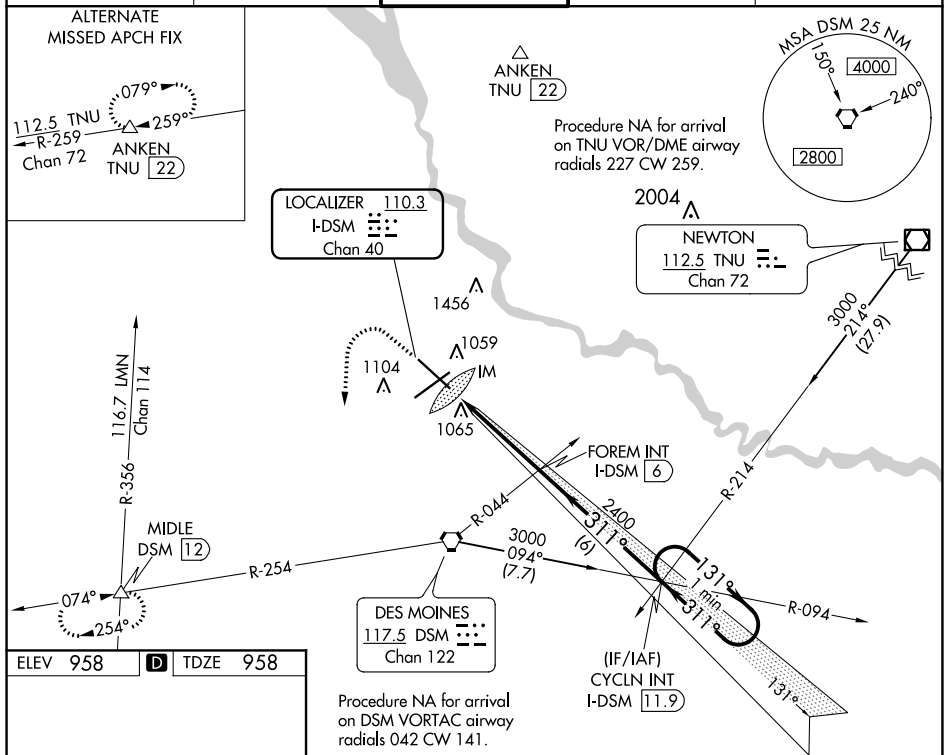


ILS RWY 31 (SA CAT I)
DES MOINES INTL (DSM)

 <p>Requires specific OPSPEC, MSPEC, or LOA approval and use of HUD to DH.</p>	<p>ALSF-2</p> 	<p>MISSED APPROACH: Climb to 1600 then climbing left turn to 3000 on heading 180° on DSM VORTAC R-254 to MIDDLE INT/12 DME and hold.</p>
---	---	--

ATIS 119.55	DES MOINES APP CON 123.9 307.15	DES MOINES TOWER 118.3 257.8	GND CON 121.9 348.6	CLNC DEL 134.15 317.55
----------------	------------------------------------	---------------------------------	------------------------	---------------------------



REIL Rwy 23
TDZ/CL Rwy 31
HIRL Rwy 13-31 and 5-23

3D View Labels: TWR 1048, 993, 1044±, 1067, 0.8% DOWN, 0.4% UP, 9002 X 150, 9003 X 150.

2D View Labels: 1600, 3000, hdg 180°, DSM R-254, MIDDLE, VGSi and ILS glidepath not coincident (VGSi Angle 3.00/TCH 56), One Minute Holding Pattern, CYCLN INT I-DSM 11.9, FOREM INT I-DSM 6, 2400, 311°, 131°, 3000, GS 3.00° TCH 52, 1103, 4.4 NM, 6 NM.

CATEGORY	A	B	C	D
S-ILS 31	RA 159/14 150 DA 1108			

SA CATEGORY I ILS-SPECIAL AIRCREW & AIRCRAFT CERTIFICATION REQUIRED

NC-3, 31 DEC 2020 to 28 JAN 2021

NC-3 31 DEC 2020 to 28 JAN 2021