

WAAS CH 72602 W13A	APP CRS 131°	Rwy Idg 9001 TDZE 922 Apt Elev 958
--	------------------------	---

RNAV (GPS) RWY 13

DES MOINES INTL (DSM)

⚠

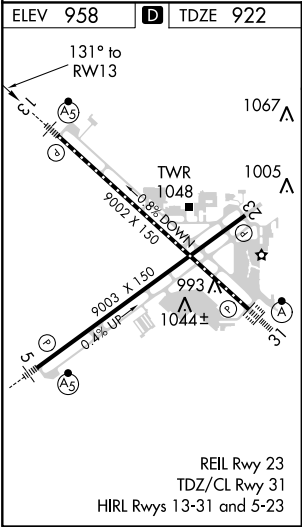
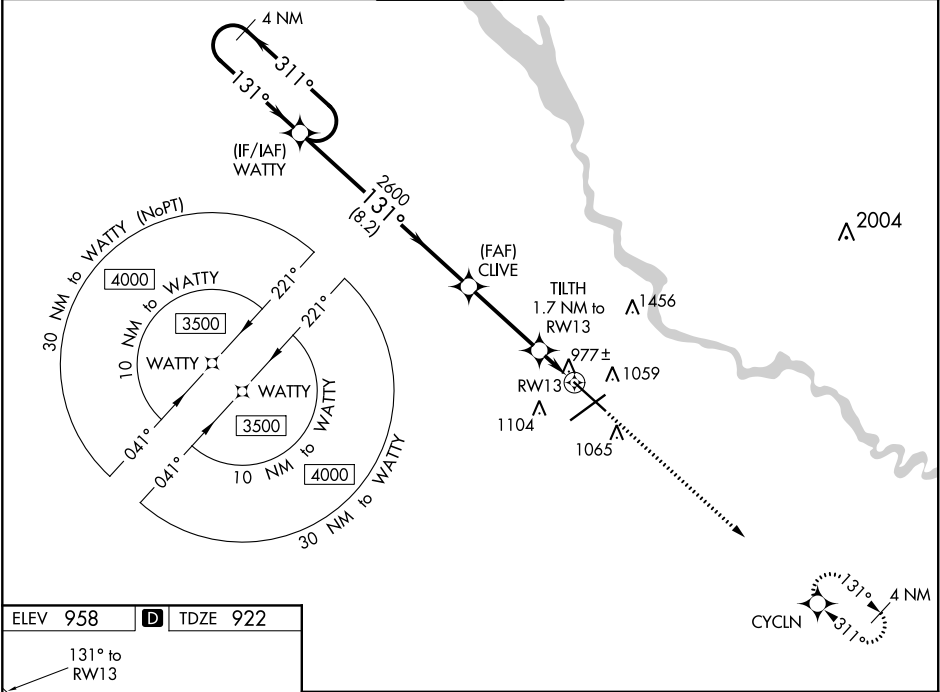
⚠

For uncompensated Baro-VNAV systems, LNAV/VNAV NA below -19°C (-2°F) or above 54°C (130°F). DME/DME RNP-0.3 NA.
For inop ALS, increase LNAV/VNAV all Cats visibility to RVR 4000 and LNAV Cats C and D visibility to RVR 4500.
RVR 1800 authorized with use of FD or AP or HUD to DA.

MALSR

MISSED APPROACH: Climb to 3000 direct CYCLN and hold.

ATIS 119.55	DES MOINES APP CON 123.9 307.15	DES MOINES TOWER 118.3 257.8	GND CON 121.9 348.6	CLNC DEL 134.15 317.55
-----------------------	---	--	-------------------------------	----------------------------------



<div>4 NM Holding Pattern</div> <div>WATTY</div> <div>CLIVE</div> <div>TILTH 1.7 NM to RW13</div> <div>3000</div> <div>CYCLN</div> <div>* LNAV only</div>				
<div>3500 ← 311°</div> <div>131° →</div> <div>131°</div> <div>2600</div> <div>* 1500</div> <div>* 0.9 NM to RW13</div> <div>RW13</div> <div>GP 3.00°</div> <div>TCH 56</div> <div>8.2 NM</div> <div>3.4 NM</div> <div>0.8 NM</div> <div>0.9 NM</div>				
CATEGORY	A	B	C	D
LPV DA#	1122/24 200 (200-½)			
LNAV/VNAV DA	1172/24 250 (300-½)			
LNAV MDA	1240/24 318 (300-½)			
CIRCLING	1420-1	462 (500-1)	1600-1¾ 642 (700-1¾)	1760-2½ 802 (900-2½)