

LOC/DME I-IRK <u>111.5</u> Chan 52	APP CRS 357°	Rwy Idg TDZE Apt Elev	6005 965 966
--	------------------------	-----------------------------	---

ILS or LOC/DME RWY 36
KIRKSVILLE RGNL (IRK)

DME required.

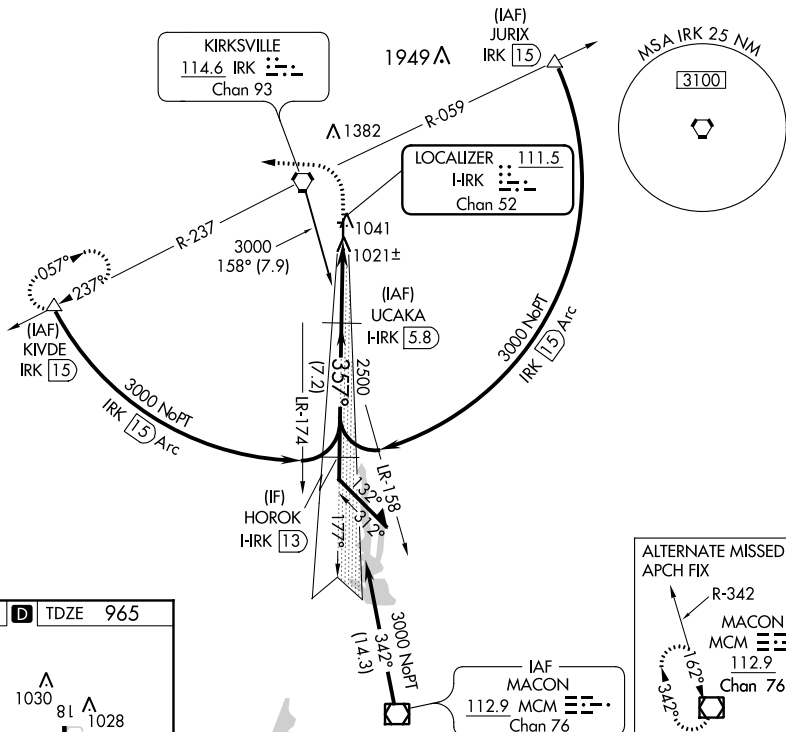
T Circling NA to Rwy 9 and 27.
For inop ALS, increase S-LOC 36 Cat D visibility $\frac{1}{4}$ SM.

MALSR



MISSED APPROACH: Climb to 1600 then climbing left turn to 3000 via heading 270° and IRK VORTAC R-237 to KIVDE/IRK 15 DME and hold.

ASOS 121.125	KANSAS CITY CENTER 132.6 370.9	UNICOM 122.8 (CTAF) 0
------------------------	--	---------------------------------



ELEV 966

TDZE 965

1030

81

1028

0.4% UP

1370 X 100

27

6005 X 100

1016

357° 4.6 NM from FAF

36

1027

REIL Rwy 18

HIRL Rwy 18-36

[illegible]