

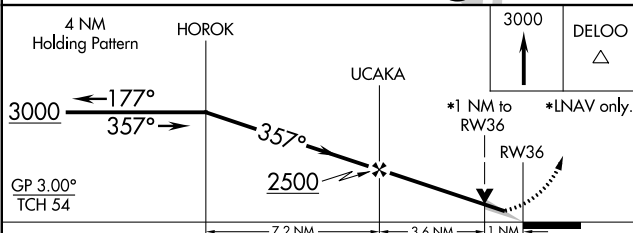
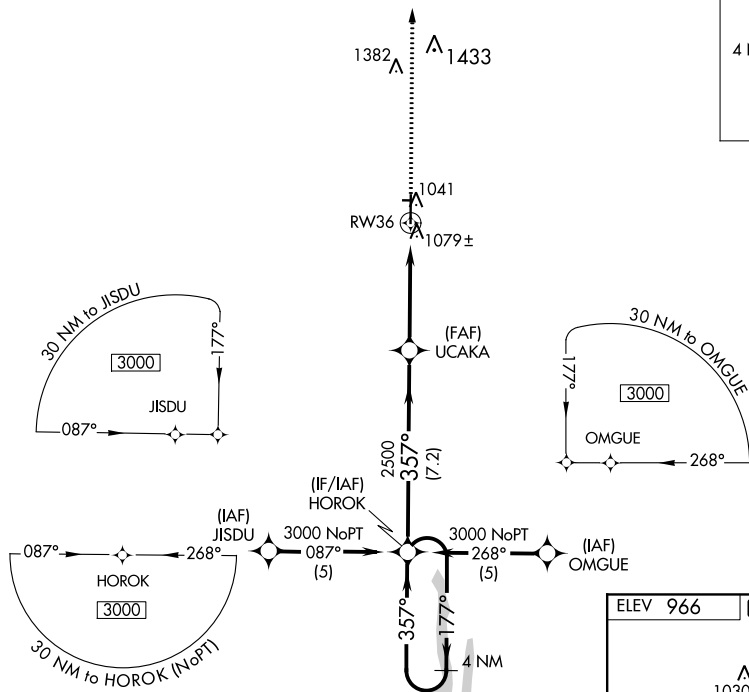
19115

RNAV (GPS) RWY 36  
KIRKSVILLE RGNL (IRK)

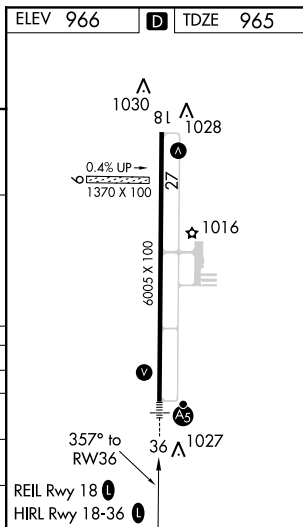
**T** Circling NA to Rwy 9 and 27. For uncompensated Baro-VNAV systems, LNAV/VNAV NA below -16°C or above 46°C.



**MISSED APPROACH:** Climb to 3000 direct DELOO and hold.

UNICOM  
122.8 (CTAF) **L**

CATEGORY	A	B	C	D
LPV DA	1165- $\frac{1}{2}$		200 (200- $\frac{1}{2}$ )	
LNAV/ VNAV DA	1349- $\frac{3}{4}$		384 (400- $\frac{3}{4}$ )	
LNAV MDA	1340- $\frac{1}{2}$ 375 (400- $\frac{1}{2}$ )			1340-1 375 (400-1)
CIRCLING	1400-1 434 (500-1)	1420-1 454 (500-1)	1420-1 $\frac{1}{2}$ 454 (500-1 $\frac{1}{2}$ )	1520-2 554 (600-2)



KIRKSVILLE RGNI (TRK)

RNAV (GPS) RWY 36

NC-3, 31 DEC 2020 to 28 JAN 2021