

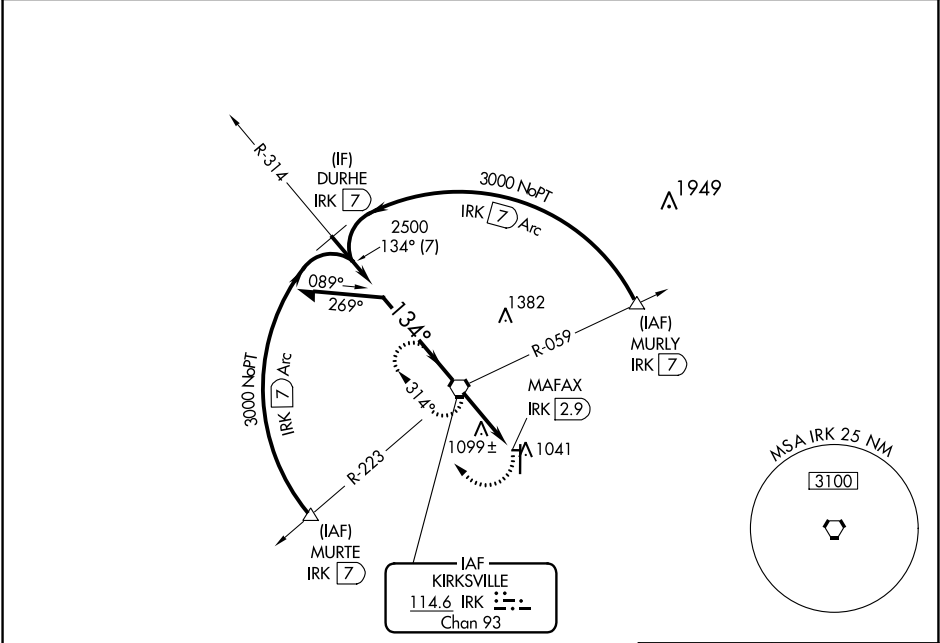
VORTAC IRK	Rwy Idg	N/A
114.6	TDZE	N/A
Chan 93	Apt Elev	966

APP CRS
134°

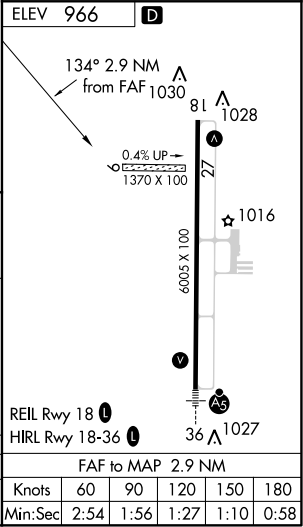
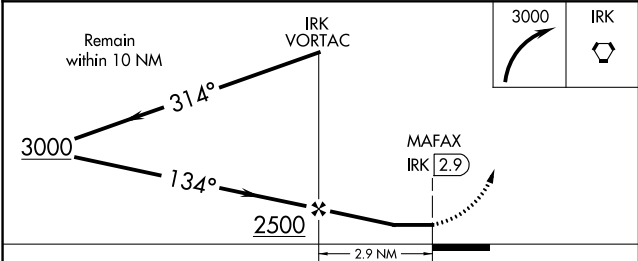
VOR-A
KIRKSVILLE RGNL (IRK)

▼ Circling NA to Rws 9 and 27.	MISSED APPROACH: Climbing right turn to 3000 direct IRK VORTAC and hold, continue climb-in-hold to 3000.
--	--

ASOS 121.125	KANSAS CITY CENTER 132.6 370.9	UNICOM 122.8 (CTAF) 0
------------------------	--	---------------------------------



NoPT for arrivals at IRK VORTAC on airway radials 259 CW 007.



CATEGORY	A	B	C	D	FAF to MAP 2.9 NM					
CIRCLING	1400-1	1420-1	1420-1½	1520-2	Knots	60	90	120	150	180
	434 (500-1)	454 (500-1)	454 (500-1½)	554 (600-2)	Min:Sec	2:54	1:56	1:27	1:10	0:58