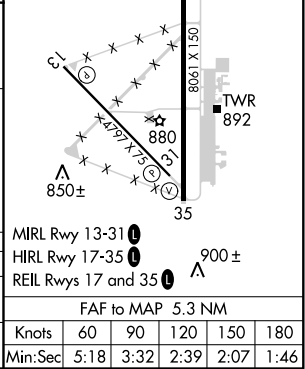
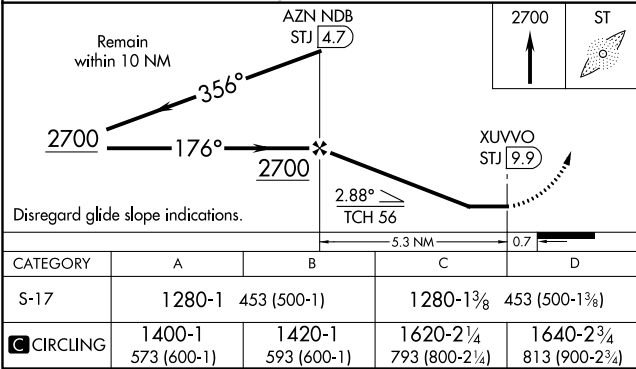
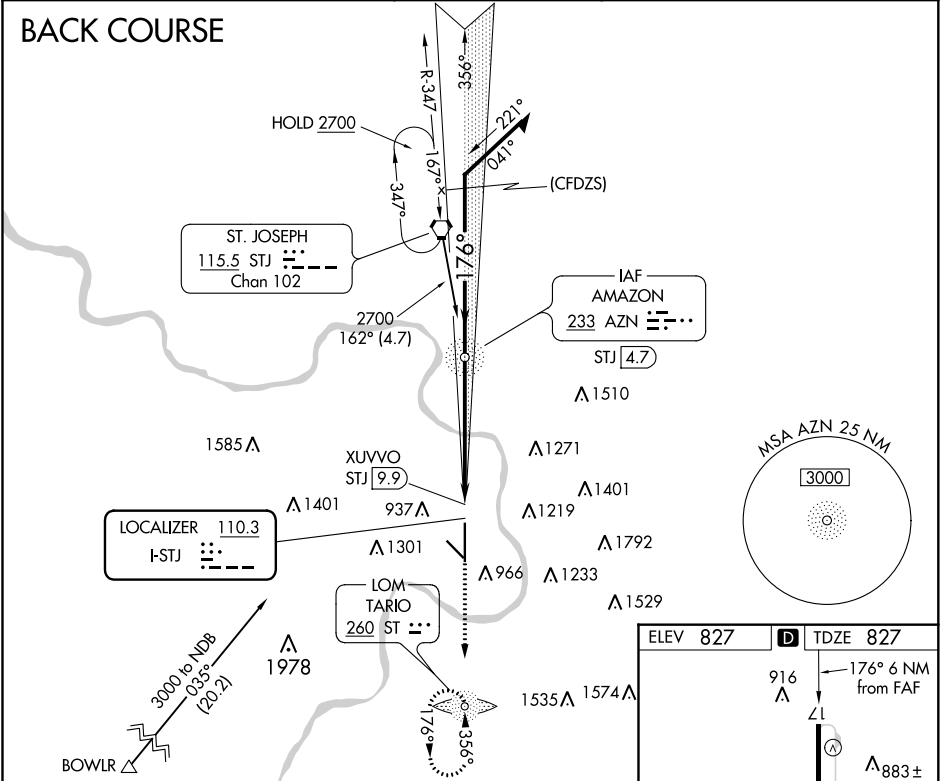


LOC I-STJ 110.3	APP CRS 176°	Rwy Idg TDZE Apt Elev	8061 827 827
---------------------------	------------------------	-----------------------------	---

LOC BC RWY 17
ROSECRANS MEMORIAL (STJ)

ADF required.		MISSED APPROACH: Climb to 2700 direct ST LOM and hold.		
DME from STJ VORTAC, simultaneous reception of I-STJ and STJ DME required.				
ATIS 125.05	ST. JOSEPH APP CON ★ 120.35 360.8	ST. JOSEPH TOWER ★ 126.9 (CTAF) 239.0	GND CON 121.9	UNICOM 122.95



NC-3, 31 DEC 2020 to 28 JAN 2021

NC-3, 31 DEC 2020 to 28 JAN 2021