

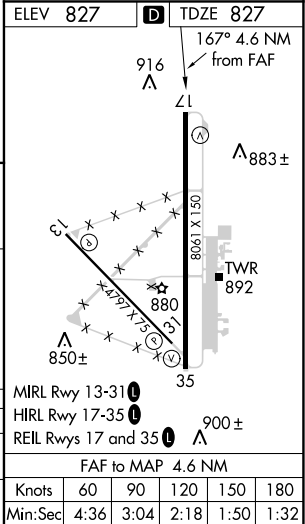
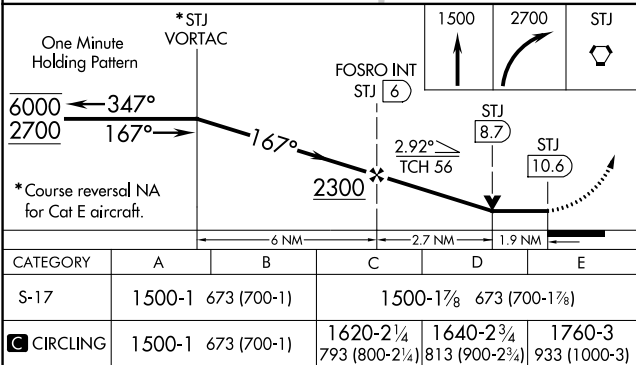
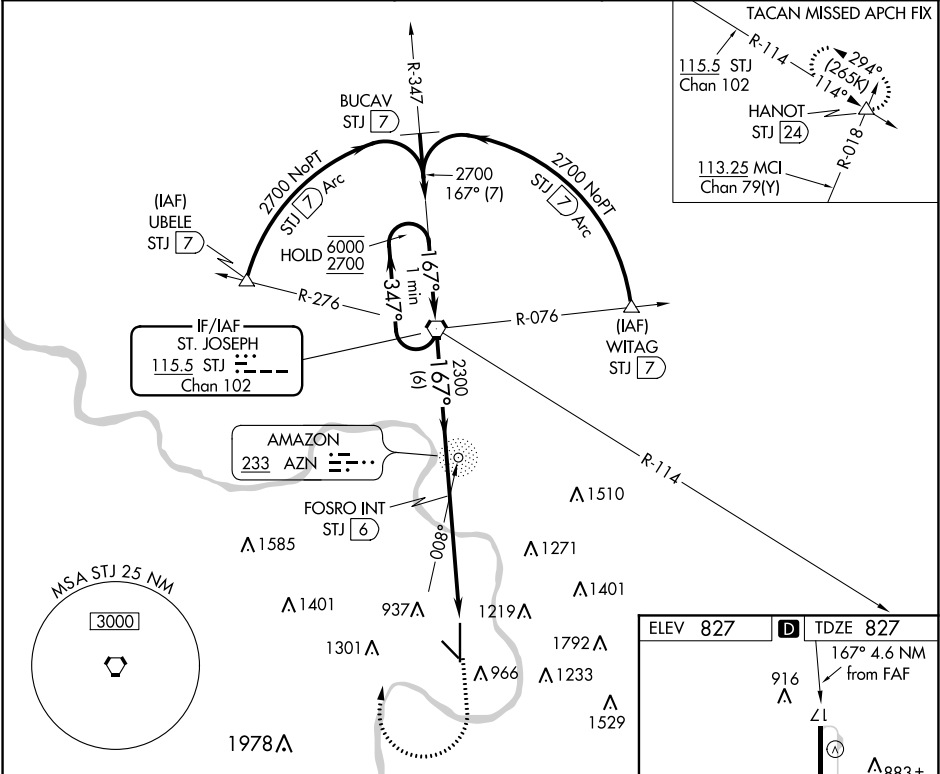


VORTAC STJ	APP CRS	Rwy Idg	8061
<b>115.5</b>	<b>167°</b>	TDZE	<b>827</b>
Chan <b>102</b>		Apt Elev	<b>827</b>

VOR or TACAN RWY 17  
ROSECRANS MEMORIAL (STJ)

ADF or DME required.		MISSED APPROACH: Climb to 1500 then climbing right turn to 2700 direct STJ VORTAC and hold. (TACAN aircraft climb to 2300 then climbing left turn to 3100 direct HANOT INT/STJ 24 DME and hold NW, LT, 114° inbound, GPS required).
	Missed approach to STJ VORTAC NA for Cat E aircraft.	
		
ASR/PAR		

ATIS <b>125.05</b>	ST. JOSEPH APP CON * <b>120.35 360.8</b>	ST. JOSEPH TOWER * <b>126.9 (CTAF) 239.0</b>	GND CON <b>121.9</b>	UNICOM <b>122.95</b>
-----------------------	---	---	-------------------------	-------------------------



NC-3, 31 DEC 2020 to 28 JAN 2021

NC-3, 31 DEC 2020 to 28 JAN 2021