

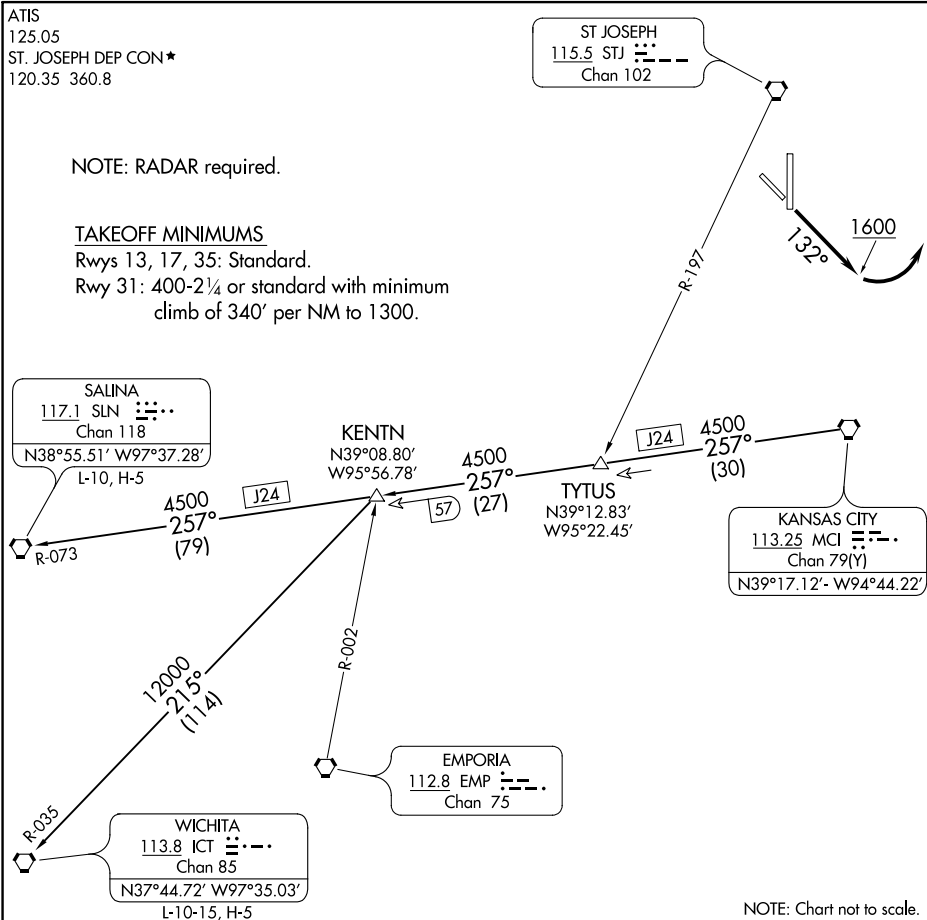
ATIS	
125.05	
ST. JOSEPH DEP CON★	
120.35	360.8

NOTE: RADAR required.

TAKEOFF MINIMUMS

Rwys 13, 17, 35: Standard.

Rwy 31: 400-2¼ or standard with minimum climb of 340' per NM to 1300.



NOTE: Chart not to scale.

DEPARTURE ROUTE DESCRIPTION

TAKEOFF RUNWAY 13: Climb heading 132° to 1600 before turning left, thence . . .
 . . . climb on assigned heading for RADAR vectors to appropriate route. Expect filed
 altitude 10 minutes after departure.

TAKEOFF ALL OTHER RUNWAYS: Climb on assigned heading for RADAR vectors to appropriate route. Expect filed altitude 10 minutes after departure.

KENTN TRANSITION (WLDCT5.KENTN): From over MCI VORTAC on MCI R-257 to KENTN.

SALINA TRANSITION (WLDCT5.SLN): From over MCI VORTAC on MCI R-257 and SLN R-073 to SLN VORTAC.

WICHITA TRANSITION (WLDCT5.ICT): From over MCI VORTAC on MCI R-257 to KENTN, then on ICT R-035 to ICT VORTAC.