

LOC/DME I-OGZ <b>111.95</b> Chan <b>56(Y)</b>	APP CRS <b>123°</b>	Rwy Idg TDZE <b>618</b> Apt Elev <b>618</b>
---	------------------------	---

**ILS RWY 11 (CAT II & III)**  
**ST LOUIS LAMBERT INTL (STL)**

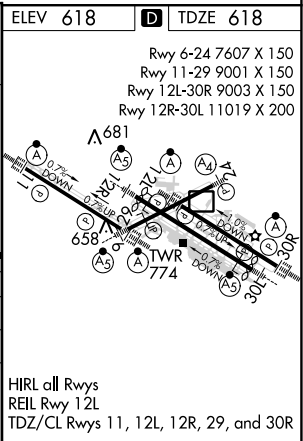
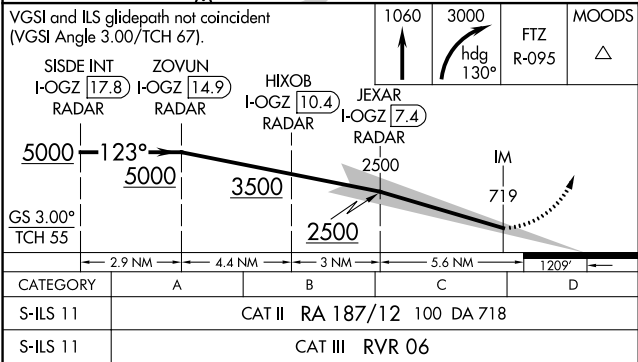
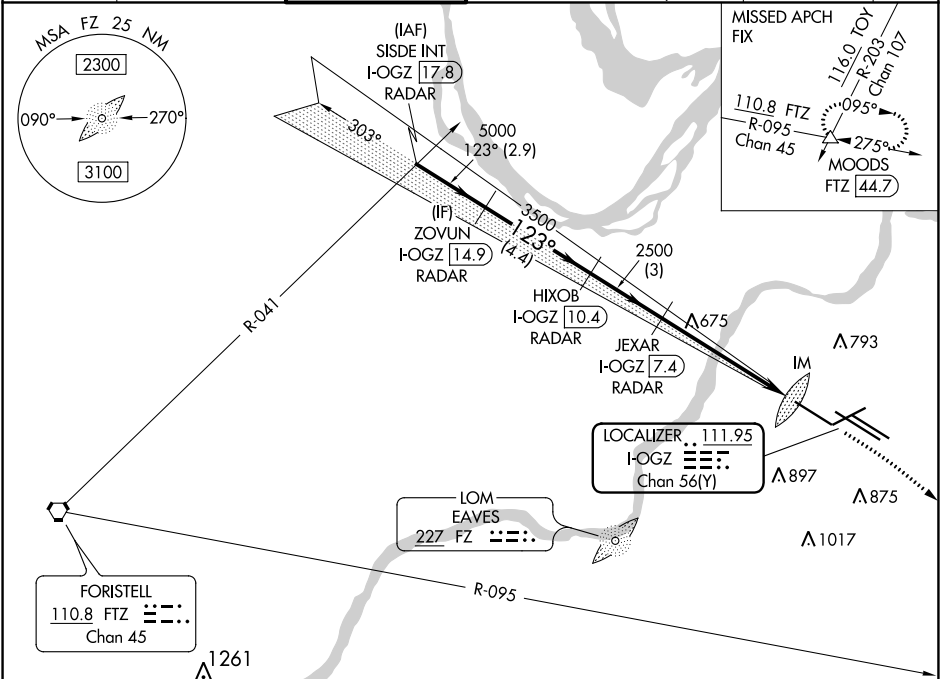
RADAR required for procedure entry. DME or RADAR required.

Simultaneous approach authorized with Rwy 12R/L.  
Disregard OM signal associated with ILS to Rwy 12R.



MISSED APPROACH: Climb to 1060 then climbing right turn to 3000 on heading 130° and FTZ R-095 to MOODS INT/FTZ 44.7 DME and hold.

D-ATIS <b>125.025</b> <b>379.925</b>	ST. LOUIS APP CON <b>132.125 360.6</b>	ST. LOUIS TOWER <b>132.475 239.275</b>	GND CON <b>121.9 348.6</b> (Inbound) <b>121.65 377.175</b> (Outbound) <b>118.925 227.125</b> (Rwy 11/29)	CLNC DEL <b>119.5 363.1</b>	CPDLC
--	---	---	---	--------------------------------	-------



**CATEGORY II & III ILS - SPECIAL AIRCREW & AIRCRAFT CERTIFICATION REQUIRED**

HIRL all Rwys  
REIL Rwy 12L  
TDZ/CL Rwys 11, 12L, 12R, 29, and 30R

NC-3, 31 DEC 2020 to 28 JAN 2021

NC-3, 31 DEC 2020 to 28 JAN 2021