

LOC/DME I-OGZ <b>111.95</b> Chan <b>56(Y)</b>	APP CRS <b>123°</b>	Rwy Idg TDZE <b>618</b> Apt Elev <b>618</b>
---	------------------------	---

ILS or LOC RWY 11

ST LOUIS LAMBERT INTL (STL)

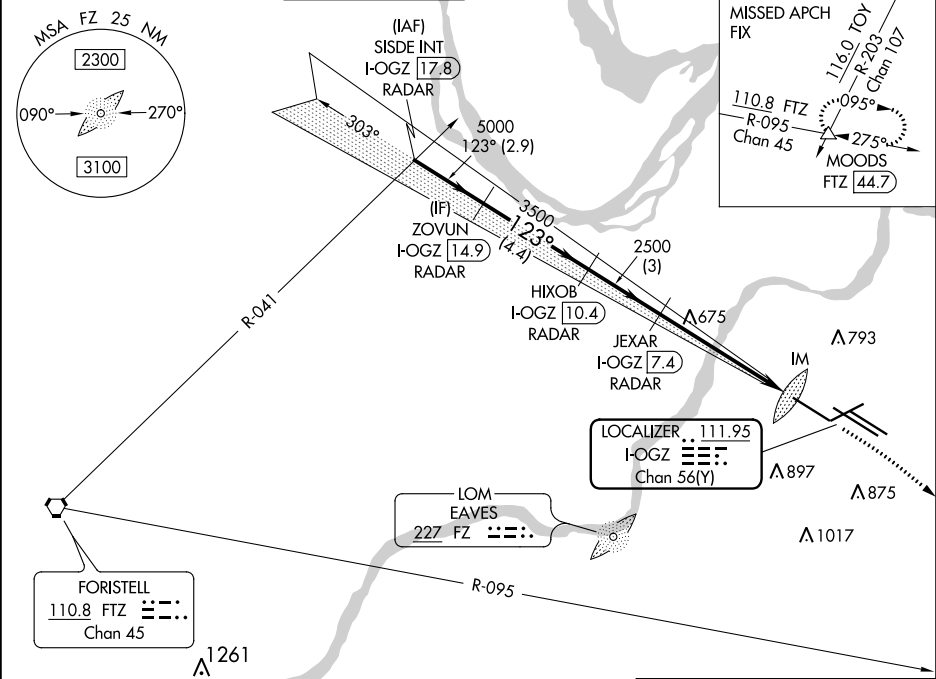
**RADAR required for procedure entry. DME or RADAR required.**

Simultaneous approach authorized with Rwy 12R/L. Disregard OM signal associated with ILS to Rwy 12R. For inop ALS, increase S-ILS Cat E visibility to RVR 4000, and S-LOC Cat C/D/E visibility to RVR 5500.

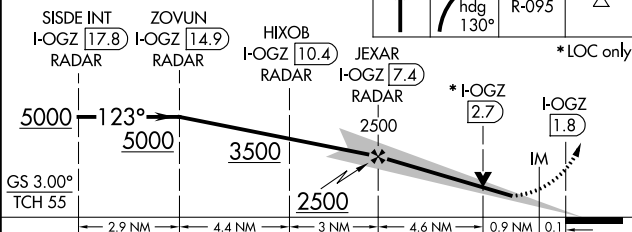
**ALSIF-2**

MISSED APPROACH: Climb to 1060 then climbing right turn to 3000 on heading 130° and FTZ R-095 to MOODS INT/FTZ 44.7 DME and hold.

D-ATIS <b>125.025</b> <b>379.925</b>	ST. LOUIS APP CON <b>132.125 360.6</b>	ST. LOUIS TOWER <b>132.475 239.275</b>	GND CON <b>121.9 348.6</b> (Inbound) <b>121.65 377.175</b> (Outbound) <b>118.925 227.125</b> (Rwy 11/29)	CLNC DEL <b>119.5 363.1</b>	CPDLC
--	---	---	---	--------------------------------	-------



VGSI and ILS glidepath not coincident (VGSI Angle 3.00/TCH 67).



CATEGORY	A	B	C	D	E
S-ILS 11	818/18 200 (200-½)				
S-LOC 11	980/24 362 (400-½)		980/35 362 (400-¾)		

