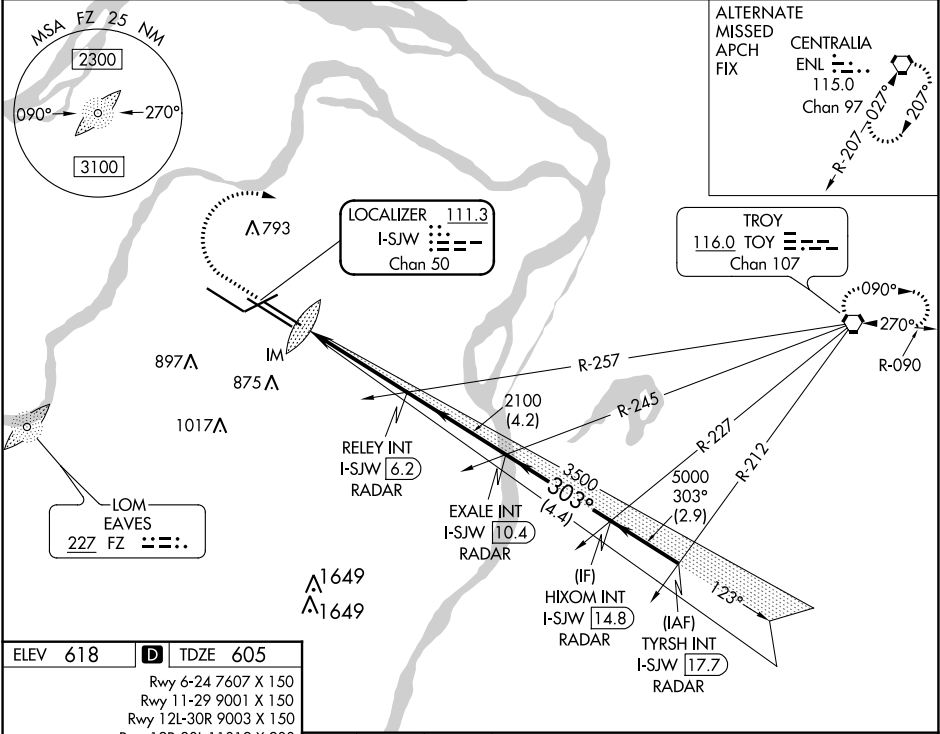


LOC/DME I-SJW 111.3 Chan 50	APP CRS 303°	Rwy ldg TDZE Apt Elev 9003 605 618
---	------------------------	--




ILS or LOC RWY 30R
ST LOUIS LAMBERT INTL (STL)

RADAR required for procedure entry.		ALSF-2 	MISSED APPROACH: Climb to 1020 then climbing right turn to 3000 direct TOY VORTAC and hold.
▼ For inop ALS, increase S-ILS 30R Cat E visibility to RVR 4000 and S-LOC 30R Cat C/D/E visibility to 1 3/4 SM. Simultaneous approach authorized with Rwy 29. Simultaneous approach authorized with Rwy 30L requires use of vertical guidance; maintain last assigned altitude until established on glideslope.			

D-ATIS 125.025 379.925	ST. LOUIS APP CON 132.125 360.6	ST. LOUIS TOWER 120.05 284.6	GND CON 121.9 348.6 (Inbound) 121.65 377.175 (Outbound) 118.925 227.125 (Rwy 11/29)	CLNC DEL 119.5 363.1	CPDLC
--	---	--	---	--------------------------------	-------



ELEV 618	D	TDZE 605
Rwy 6-24 7607 X 150 Rwy 11-29 9001 X 150 Rwy 12L-30R 9003 X 150 Rwy 12R-30L 11019 X 200		
HIRL all Rwys REIL Rwy 12L TDZ/CL Rwys 11, 12L, 12R, 29, and 30R FAF to MAP 4.5 NM		
Knots	60	90 120 150 180
Min:Sec	4:30	3:00 2:15 1:48 1:30

1020	3000	TOY			
					
*LOC only	*I-SJW				
I-SJW 1.7	I-SJW 3				
RELEY INT I-SJW 6.2 RADAR	EXALE INT I-SJW 10.4 RADAR	HIXOM INT I-SJW 14.8 RADAR			
TYRSH INT I-SJW 17.7 RADAR					
2100	3500	5000			
0.1	1.2 NM	3.2 NM 4.2 NM 4.4 NM 2.9 NM			
CATEGORY	A	B C D E			
S-ILS 30R	805/18 200 (200-½)				
S-LOC 30R	1080/24 475 (500-½) 1080/50 475 (500-1)				

NC-3, 31 DEC 2020 to 28 JAN 2021

NC-3, 31 DEC 2020 to 28 JAN 2021