

LOC/DME I-JAK 110.3 Chan 40	APP CRS 064°	Rwy Idg 7352 TDZE 551 Apt Elev 618
---	------------------------	---

ILS or LOC RWY 6
ST LOUIS LAMBERT INTL (STL)

DME or RADAR required. DME or RADAR required for procedure entry.



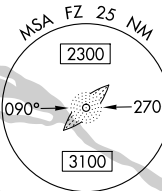
MISSED APPROACH: Climb to 2200 then climbing left turn to 3000 direct STL VORTAC and hold, continue climb-in-hold to 3000.

D-ATIS 125.025 379.925	ST. LOUIS APP CON 132.125 360.6	ST. LOUIS TOWER 132.475 239.275	GND CON 121.9 348.6 (Inbound) 121.65 377.175 (Outbound) 118.925 227.125 (Rwy 11/29)	CLNC DEL 119.5 363.1	CPDLC
--	---	---	---	--------------------------------	-------

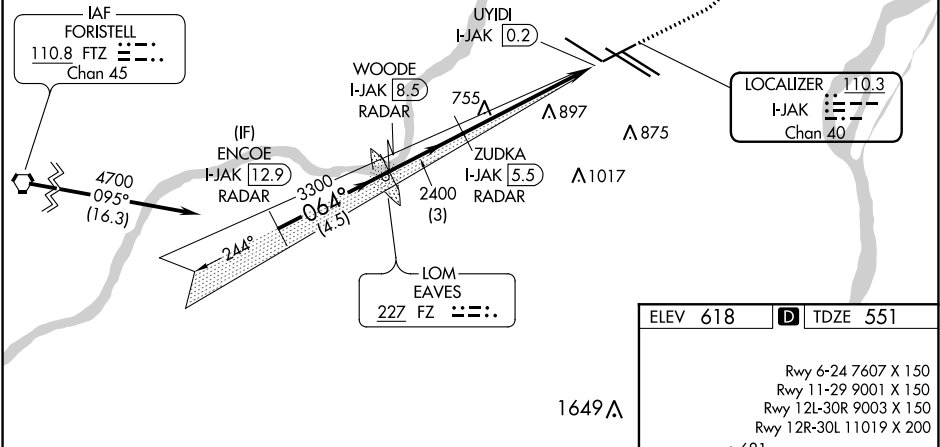
ALTERNATE MISSED
APCH FIX

090°
270°
R-090

TROY
TOY
116.0
Chan 107



Procedure NA for arrival on FTZ VORTAC
airway radials 082 CW 095.



ENCOE I-JAK <u>12.9</u> RADAR		LOC unusable 0.2 DME inbound.		2200 ↑	3000 ↷	STL ⬡
4700		WOODE I-JAK <u>8.5</u> RADAR	ZUDKA I-JAK <u>5.5</u> RADAR	2400	*LOC only	
064°		3300	2400	*I-JAK <u>1.2</u>	UYIDI I-JAK <u>0.2</u>	
GS 3.00° TCH 50		2400		↷		
4.5 NM		3 NM		4.3 NM		0.9 NM 0.4
CATEGORY	A	B	C	D	E	
S-ILS 6	751/24 200 (200-½)					
S-LOC 6	1020/24 469 (500-½)			1020/50 469 (500-1)		

ELEV 618 TDZE 551

Rwy 6-24 7607 X 150
Rwy 11-29 9001 X 150
Rwy 12L-30R 9003 X 150
Rwy 12R-30L 11019 X 200

1649 A

064° 5.7 NM from FAF

HIRL all Rws
REIL Rwy 12L
TDZ/CL Rws 11, 12L, 12R, 29, and 30R
FAF to MAP 5.3 NM

Knots	60	90	120	150	180
Min:Sec	5:18	3:32	2:39	2:07	1:46

NC-3, 31 DEC 2020 to 28 JAN 2021

NC-3, 31 DEC 2020 to 28 JAN 2021