

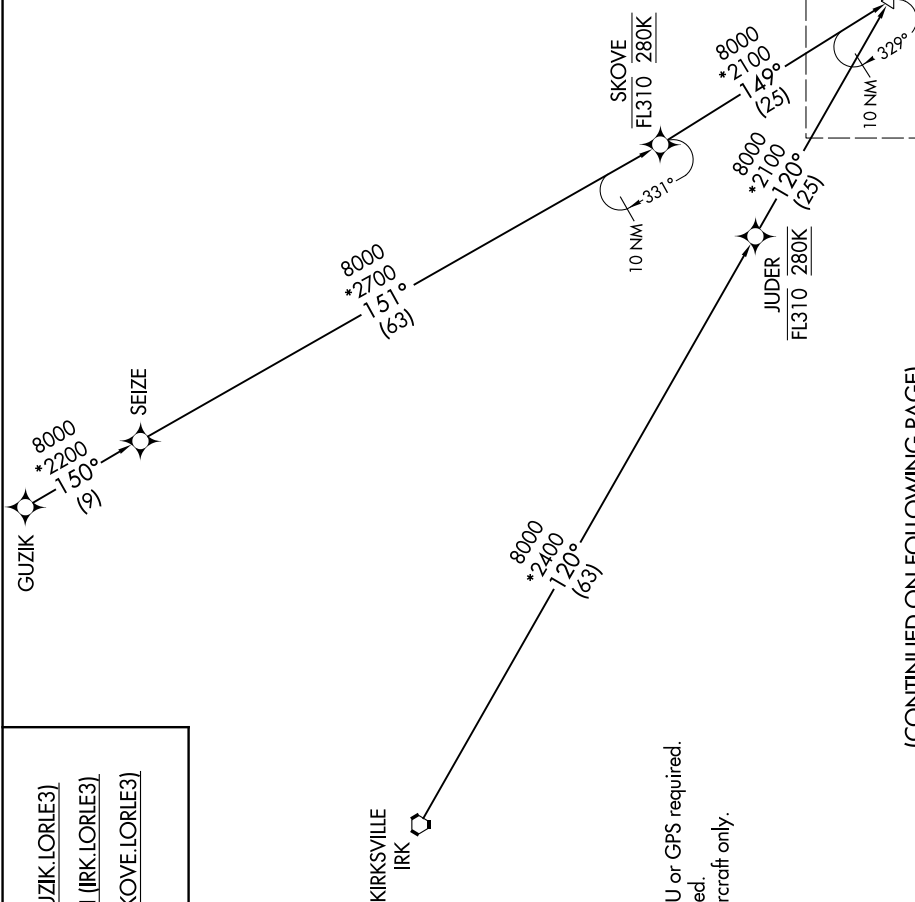
ST LOUIS LAMBERT INTL (STL)
ST. LOUIS, MISSOURI

LORLE THREE ARRIVAL (RNAV) Transition Routes

ST LOUIS APP CON
132.125 360.6
D-ATIS
125.025 379.925

$$Z \leftarrow$$

See following page
for Arrival Routes.



GUZIK TRANSITION [GUZIK.LORLE3]
KIRKSVILLE TRANSITION [IRK.LORLE3]
SKOVE TRANSITION [SKOVE.LORLE3]

NOTE: DME/DME/IRU or GPS required.
NOTE: RADAR required.
NOTE: For turbojet aircraft only.
NOTE: RNAV-1.

(CONTINUED ON FOLLOWING PAGE)

NOTE: Chart not to scale.

NC-3, 31 DEC 2020 to 28 JAN 2021

LORLE THREE ARRIVAL (RNAV) Transition Routes

(LORLE.LORLE3) 07DEC17

ST. LOUIS, MISSOURI
ST. LOUIS LAMBERT INTL (STL)