

WAAS CH 87021 W24A	APP CRS 244°	Rwy Idg TDZE 534 Apt Elev 618
--	------------------------	---

RNAV (GPS) RWY 24

ST LOUIS LAMBERT INTL (STL)

▼

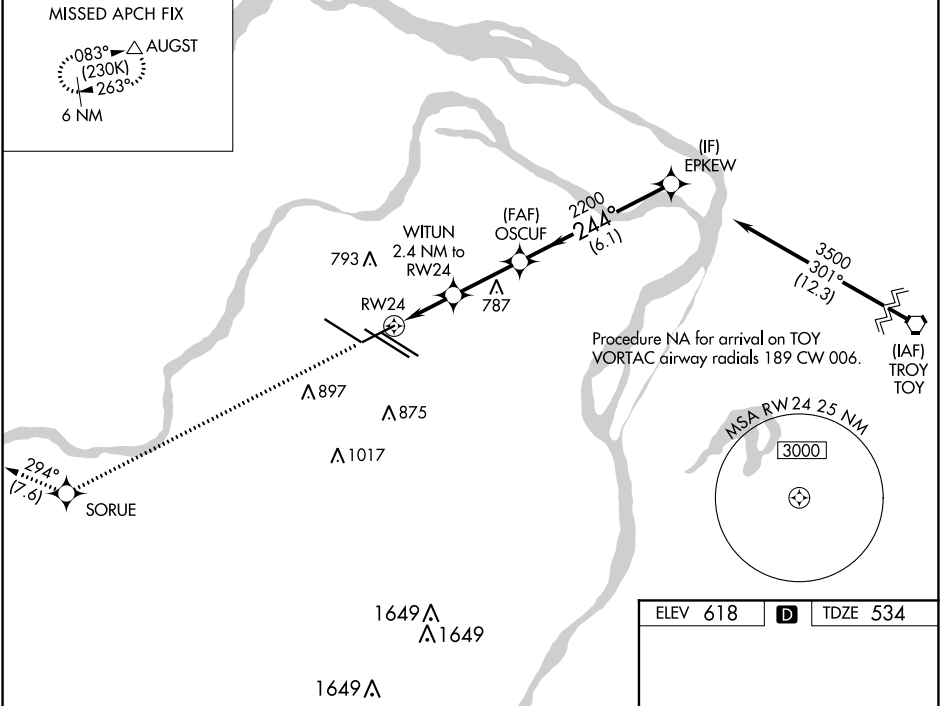
For uncompensated Baro-VNAV systems, LNAV/VNAV NA below -16°C (4°F) or above 54°C (130°F). Rwy 24 helicopter visibility reduction below ¾ SM NA. DME/DME RNP-0.3 NA. For inop ALS, increase LNAV/VNAV all Cats visibility to 1¾ and LNAV Cats C, D and E visibility to 1½.

MALS

MISSED APPROACH:

Climb to 3000 direct SORUE and on track 294° to AUGST and hold.

D-ATIS 125.025 379.925	ST. LOUIS APP CON 132.125 360.6	ST. LOUIS TOWER 120.05 284.6	GND CON 121.9 348.6 (Inbound) 121.65 377.175 (Outbound) 118.925 227.125 (Rwy 11/29)	CLNC DEL 119.5 363.1	CPDLC
--	---	--	---	--------------------------------	-------



ELEV 618	D	TDZE 534
----------	----------	----------

3000

SORUE

tr 294°

AUGST

*LNAV only

CATEGORY	A	B	C	D	E
LPV DA	734/40		200 (200-¾)		
LNAV/VNAV DA	931/50		397 (400-1)		
LNAV MDA	1080/40 546 (500-¾)		1080-1¾ 546 (500-1¾)		

Rwy 6-24 7607 X 150
Rwy 11-29 9001 X 150
Rwy 12L-30R 9003 X 150
Rwy 12R-30L 11019 X 200

HIRL all Rwys
REIL Rwy 12L
TDZ/CL Rwys 11, 12L, 12R, 29, and 30R