


APP CRS	Rwy Idg	<b>9001</b>
<b>123°</b>	TDZE	<b>618</b>
	Apt Elev	<b>618</b>

**RNAV (RNP) Z RWY 11**  
ST LOUIS LAMBERT INTL (STL)

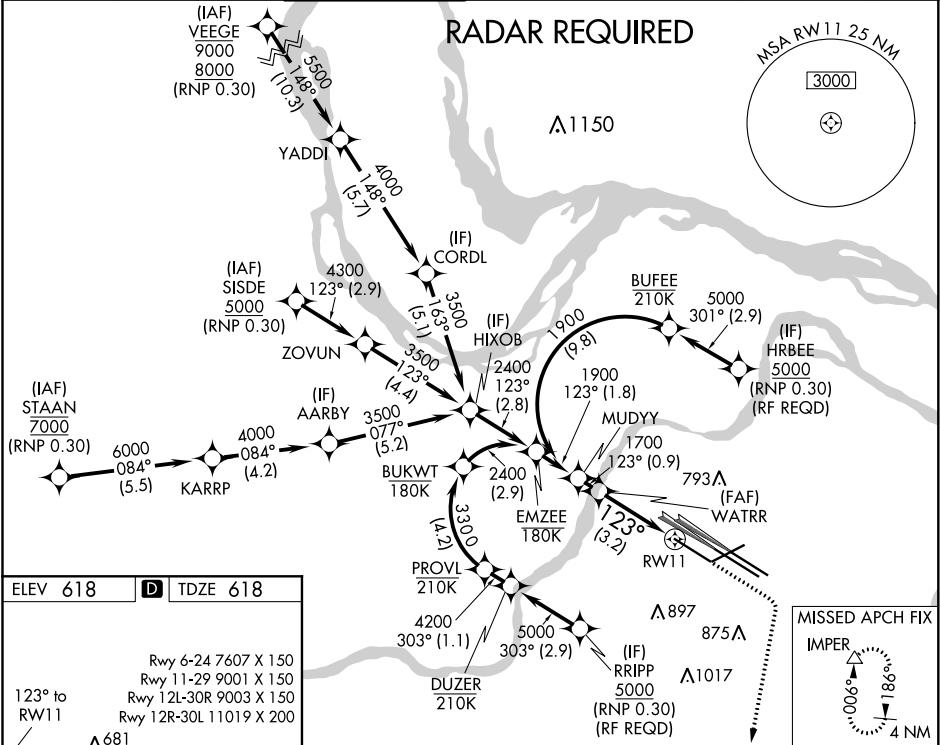
**V** For uncompensated Baro-VNAV systems, procedure NA below -16°C (4°F) or above 54°C (130°F). Simultaneous approach authorized with Rwy 12L/R, except for arrivals at RRIPP and HRBEE. Use of FD or AP providing RNAV track guidance required during simultaneous operations. GPS required. For inop ALS, increase RNP 0.30 all Cats visibility to ¾.

ALSF-2



MISSED APPROACH: Climb to 1100 then climbing right turn to 3000 direct IMPER and hold.

D-ATIS <b>125.025</b> <b>379.925</b>	ST. LOUIS APP CON <b>132.125 360.6</b>	ST. LOUIS TOWER <b>132.475 239.275</b>	GND CON <b>121.9 348.6</b> (Inbound) <b>121.65 377.175</b> (Outbound) <b>118.925 227.125</b> (Rwy 11/29)	CLNC DEL <b>119.5 363.1</b>	CPDLC
--	---	---	---	--------------------------------	-------



ELEV 618

**D** TDZE 618

Rwy 6-24 7607 X 150  
Rwy 11-29 9001 X 150  
Rwy 12L-30R 9003 X 150  
Rwy 12R-30L 11019 X 200

123° to RW11