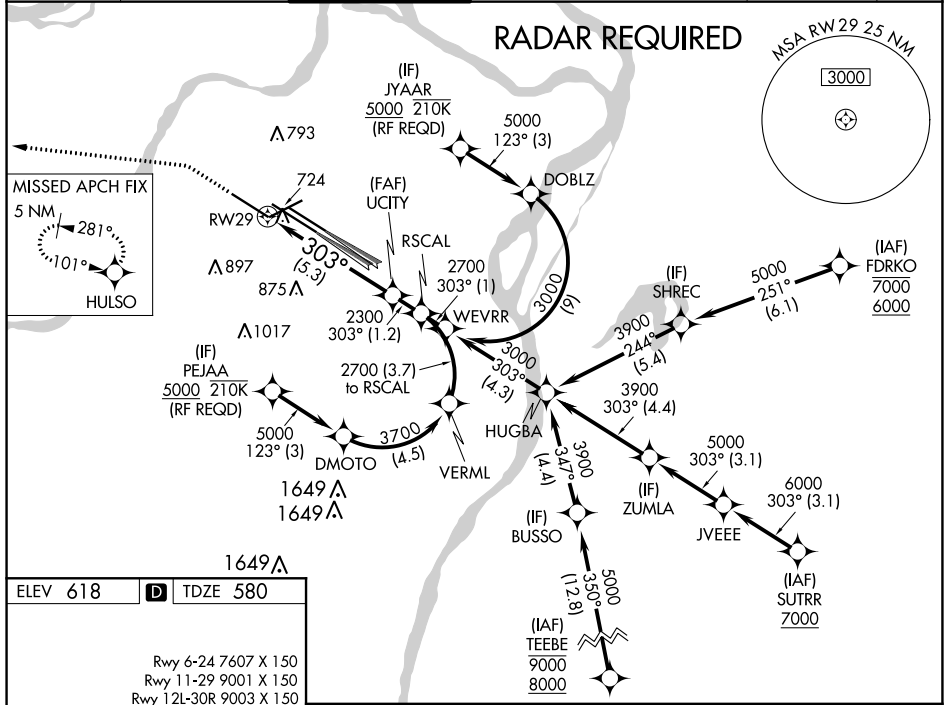



RNAV (RNP) Z RWY 29
ST LOUIS LAMBERT INTL (STL)

MISSED APPROACH: Climb to 1100 then climbing left turn to 3000 direct HULSO and hold.

D-ATIS 125.025 379.925	ST. LOUIS APP CON 132.125 360.6	ST. LOUIS TOWER 132.475 239.275	GND CON 121.9 348.6 (Inbound) 121.65 377.175 (Outbound) 118.925 227.125 (Rwy 11/29)	CLNC DEL 119.5 363.1	CPDLC
--	---	---	---	--------------------------------	-------



HIRL all Rwy
REIL Rwy 12L
TDZ/CL Rwy 11, 12L, 12R, 29, and 30R



VGS and RNAV glidepath not coincident.
(VGS Angle 3.00/TCH 73).

See Planview for multiple IF locations.

RW29

UCITY 2300

RSCAL 2700

303°

2300

GP 3.00°
TCH 56

5.3 NM

1.2 NM

CATEGORY	A	B	C	D
RNP 0.12 DA		963/50	383 (400-1)	
RNP 0.17 DA		1035/50	455 (500-1)	
RNP 0.30 DA		1088/60	508 (500-1½)	

AUTHORIZATION REQUIRED

ST LOUIS LAMBERT INTL (STL)
RNAV (RNP) Z RWY 29

NC-3, 31 DEC 2020 to 28 JAN 2021