
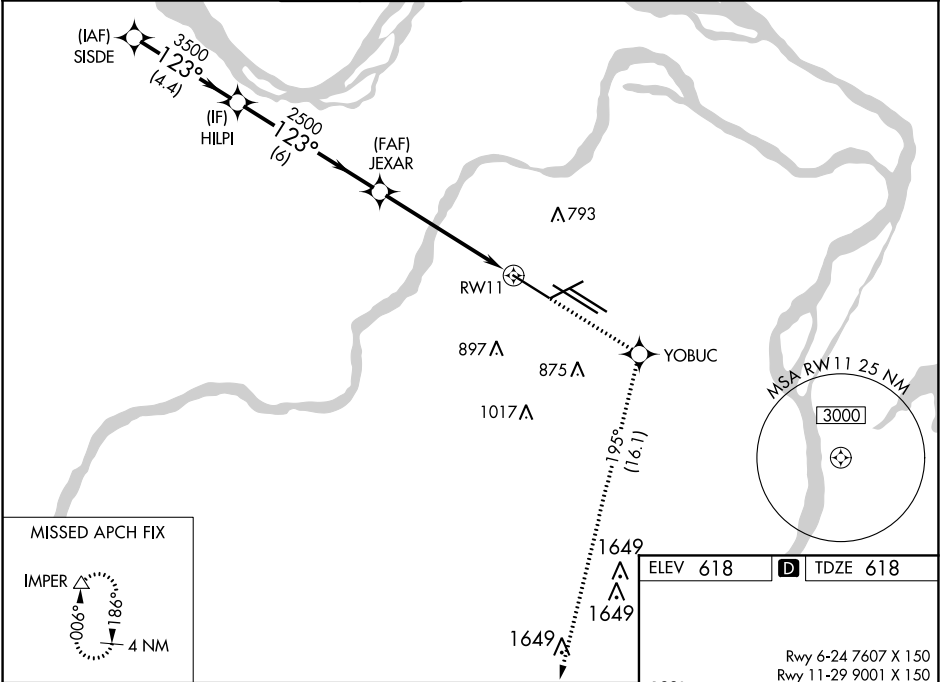


WAAS CH 82699 W11A	APP CRS 123°	Rwy Idg TDZE Apt Elev	9001 618 618
--	------------------------	-----------------------------	---

RNAV (GPS) Y RWY 11
ST LOUIS LAMBERT INTL (STL)

RNP APCH.				ALSIF-2 	MISSED APPROACH: Climb to 3000 direct YOBUC and on track 195° to IMPER and hold.	
▼ Simultaneous approach authorized. Use of FD or AP required during simultaneous operations. LNAV procedure NA during simultaneous operations. For uncompensated Baro-VNAV systems, LNAV/VNAV NA below -16°C or above 54°C. For inop ALS, increase LPV Cat E visibility to RVR 4000 and LNAV Cat E visibility to 1¼ SM.						
D-ATIS 125.025 379.925	ST. LOUIS APP CON 132.125 360.6	ST. LOUIS TOWER 132.475 239.275	GND CON 121.9 348.6 (Inbound) 121.65 377.175 (Outbound) 118.925 227.125 (Rwy 11/29)		CLNC DEL 119.5 363.1	CPDLC



VGSI and RNAV glidepath not coincident (VGSI Angle 3.00/TCH 67°).		3000	YOBUC	tr 195°	IMPER
SISDE		HILPI	JEXAR	RW11	IMPER
5000		3500	2500	1649	1649
GP 3.00° TCH 55		4.4 NM	6 NM	4.5 NM	1.1 NM
CATEGORY	A	B	C	D	E
LPV DA	868/18 250 (300-½)				
LNAV/VNAV DA	960/40 342 (400-¾)				
LNAV MDA	1040/24	422 (500-½)	1040/40 422 (500-¾)	1040/50	422 (500-1)

RNAV (GPS) Y RWY 11 approach chart. The chart shows the glide path from 3500 feet at 123 degrees, passing through 2500 feet at 123 degrees, and 1649 feet at 195 degrees. The chart includes various navigation aids like (IAF) SISDE, (IF) HILPI, (FAF) JEXAR, and YOBUC. It also shows the missed approach fix (IMPER) and the missed approach procedure (MISA RW11 25 NM).