

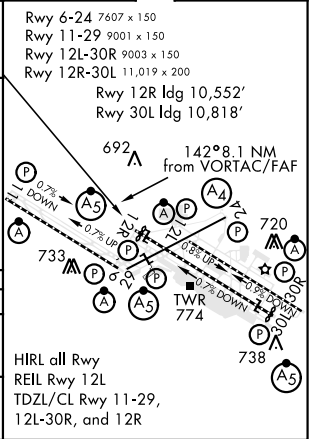
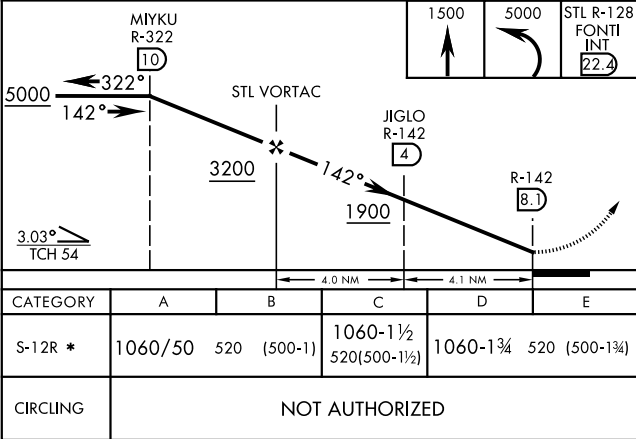
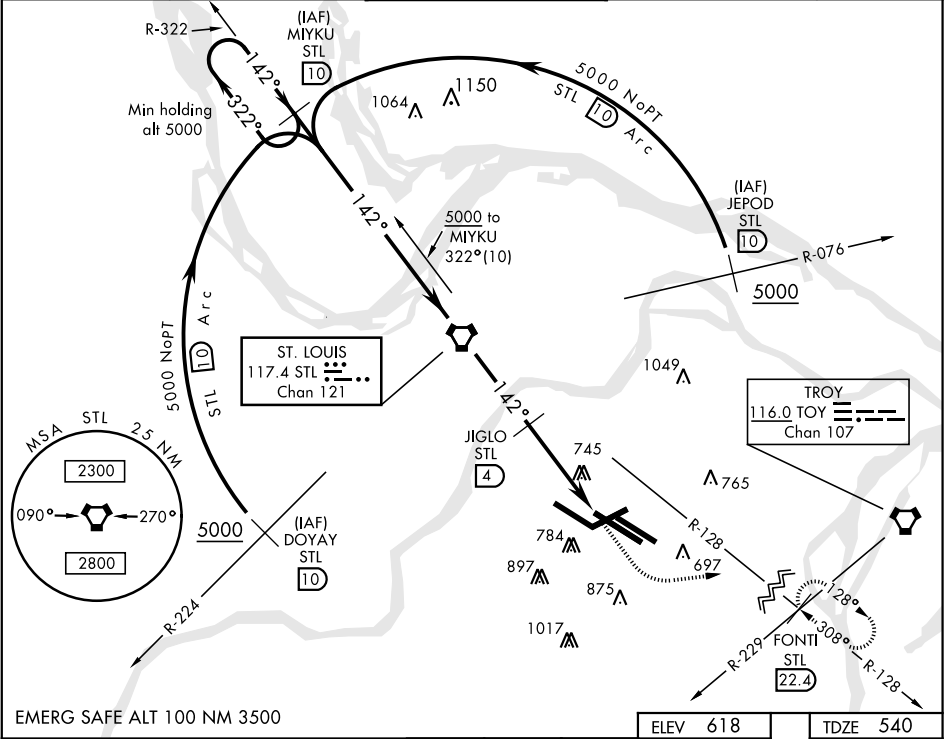
ST. LOUIS, MISSOURI

VORTAC STL 117.4 Chan 121	APCH CRS 142°	Rwy ldg 10,552 TDZE 540 Arpt Elev 618
---------------------------------	------------------	---

AL-360 [USAF]

TACAN RWY 12R
ST. LOUIS LAMBERT INTL (KSTL)

<div><div><div><div></div><div></div></div><div><div></div><div></div></div></div><div><div></div><div></div></div></div> <div>* Inoperative table does not apply.</div>		<div><div><div><div></div><div></div></div><div><div></div><div></div></div></div><div><div></div><div></div></div></div> <div>MALSR</div>		<div>MISSED APPROACH: Climb to 1500 then climbing left turn to 5000 intercept STL R-128 to FONTI INT/STL 22.4 DME and hold, continue climb in hold.</div>					
<div>ATIS</div> <div>125.025 379.925</div>		<div>ST. LOUIS APP CON</div> <div>121.02 338.25</div>		<div><div><div>N</div><div>ST. LOUIS TOWER</div><div>S</div></div><div><div>120.05</div><div>132.475</div><div>118.5</div></div><div><div>284.6</div><div>239.275</div><div>257.7</div></div></div>		<div><div><div>GND CON</div><div>(Inbnd)</div><div>(Outbnd)</div><div>(West)</div></div><div><div>121.9</div><div>348.6</div><div>121.65</div><div>377.175</div><div>118.925</div><div>227.125</div></div></div>		<div>CLNC DEL</div> <div>119.5 363.1</div>	



ST. LOUIS, MISSOURI
Amdt 1 18200

38°45'N-90°22'W

ST. LOUIS LAMBERT INTL (KSTL)

TACAN RWY 12R

NC-3, 31 DEC 2020 to 28 JAN 2021

NC-3, 31 DEC 2020 to 28 JAN 2021