

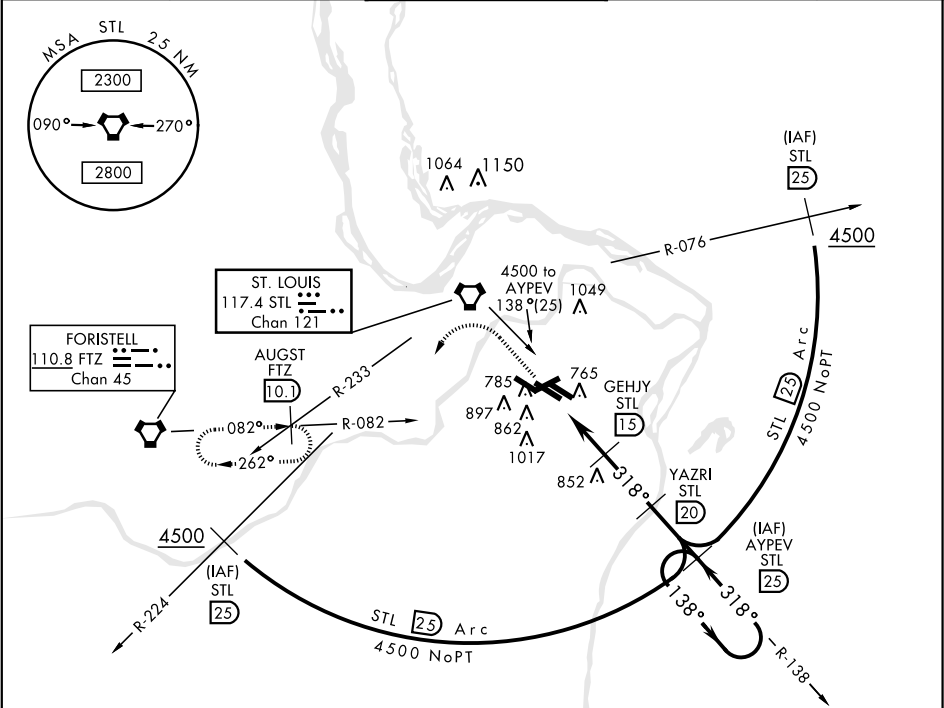
ST. LOUIS, MISSOURI

VORTAC STL 117.4 Chan 121	APCH CRS 318°	Rwy ldg 10,818 TDZE 583 Arprt Elev 618
---------------------------------	------------------	--

AL-360 [USAF]

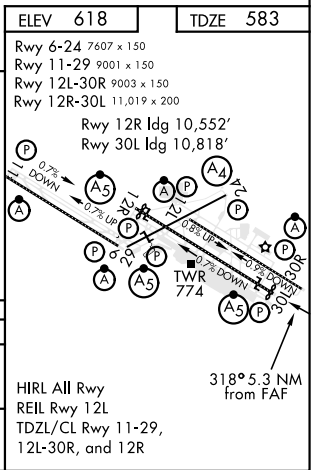
TACAN RWY 30L  
ST. LOUIS LAMBERT INTL (KSTL)

* Inoperative table does not apply.			MALSR A5	MISSED APPROACH: Climb to 5000 via STL R-138 and FTZ VORTAC R-082 to AUGST INT/FTZ 10.1 DME and hold.		
ATIS 125.025 379.925	ST. LOUIS APP CON 121.02 338.25	N 120.05 284.6	ST. LOUIS TOWER W 132.475 239.275	S 118.5 257.7	GND CON (Inbd) 121.9 348.6 (Outbd) 121.65 377.175 (West) 118.925 227.125	CLNC DEL 119.5 363.1



EMERG SAFE ALT 100 NM 3500

5000 STL R-138	FTZ VORTAC R-082	AUGST INT FTZ 10.1	GEHJY 15	YAZRI 20	AYPEV R-138 25
VORTAC					
318°					
2300					
3600					
4500					
2.95°					
TCH 58					
5.3 NM					
CATEGORY	A	B	C	D	E
S-30L *	1100/50	517 (500-1)	1100-1½ 517(500-1½)	1100-1¾	517 (500-1¾)
CIRCLING	NOT AUTHORIZED				



ST. LOUIS, MISSOURI  
Amdt 1 18200

38°45'N-90°22'W

ST. LOUIS LAMBERT INTL (KSTL)

TACAN RWY 30L

NC-3, 31 DEC 2020 to 28 JAN 2021

NC-3, 31 DEC 2020 to 28 JAN 2021